

Datasheet for ABIN6262925
anti-LC3B antibody (N-Term)[3 Images](#)[4 Publications](#)[Go to Product page](#)

Overview

Quantity:	100 µL
Target:	LC3B (MAP1LC3B)
Binding Specificity:	N-Term
Reactivity:	Human, Mouse, Rat
Host:	Rabbit
Clonality:	Polyclonal
Conjugate:	This LC3B antibody is un-conjugated
Application:	Western Blotting (WB), ELISA, Immunohistochemistry (IHC), Immunofluorescence (IF), Immunocytochemistry (ICC)

Product Details

Immunogen:	A synthesized peptide derived from human LC3B, corresponding to a region within N-terminal amino acids.
Isotype:	IgG
Specificity:	LC3A/B Antibody detects endogenous levels of total LC3A/B.
Predicted Reactivity:	Pig,Zebrafish,Bovine,Sheep,Dog,Xenopus
Purification:	The antiserum was purified by peptide affinity chromatography using SulfoLink™ Coupling Resin (Thermo Fisher Scientific).

Target Details

Target:	LC3B (MAP1LC3B)
---------	-----------------

Target Details

Alternative Name:	MAP1LC3A,MAP1LC3B (MAP1LC3B Products)
Background:	<p>Description: Ubiquitin-like modifier involved in formation of autophagosomal vacuoles (autophagosomes). Plays a role in mitophagy which contributes to regulate mitochondrial quantity and quality by eliminating the mitochondria to a basal level to fulfill cellular energy requirements and preventing excess ROS production. Whereas LC3s are involved in elongation of the phagophore membrane, the GABARAP/GATE-16 subfamily is essential for a later stage in autophagosome maturation. Promotes primary ciliogenesis by removing OFD1 from centriolar satellites via the autophagic pathway.</p> <p>Gene: MAP1LC3B</p>
Molecular Weight:	14.16 kDa
Gene ID:	84557, 81631
UniProt:	Q9H492 , Q9GZQ8
Pathways:	Autophagy

Application Details

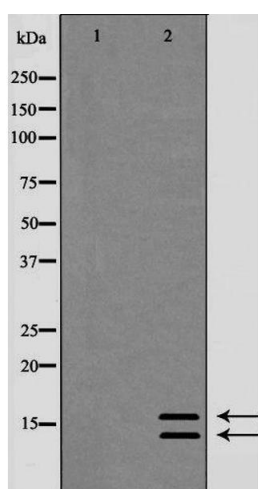
Application Notes:	WB 1:500-1:2000, IHC 1:50-1:200, IF/ICC 1:100-1:500, ELISA(peptide) 1:20000-1:40000
Restrictions:	For Research Use only

Handling

Format:	Liquid
Concentration:	1 mg/mL
Buffer:	Rabbit IgG in phosphate buffered saline , pH 7.4, 150 mM NaCl, 0.02 % sodium azide and 50 % glycerol.
Preservative:	Sodium azide
Precaution of Use:	This product contains Sodium azide: a POISONOUS AND HAZARDOUS SUBSTANCE which should be handled by trained staff only.
Storage:	-20 °C
Storage Comment:	Store at -20 °C. Stable for 12 months from date of receipt.
Expiry Date:	12 months

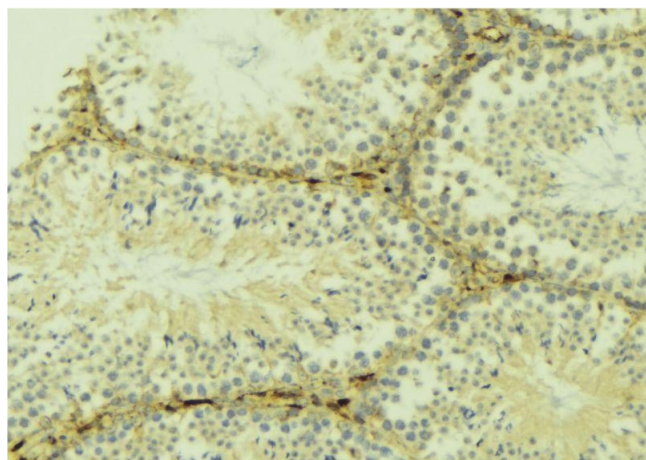
Product cited in: Li, Xiao, Yang, Qin, Gao, Liu, Zhou: "Parthenolide attenuated bleomycin-induced pulmonary fibrosis via the NF- κ B/Snail signaling pathway." in: **Respiratory research**, Vol. 19, Issue 1, pp. 111, (2018) ([PubMed](#)).

Images



Western Blotting

Image 1. Western blot analysis of Ic3A/B expression in HeLa whole cell lysate. The lane on the left is treated with the antigen-specific peptide.



Immunohistochemistry

Image 2. ABIN6268948 at 1/100 staining Mouse testis tissue by IHC-P. The sample was formaldehyde fixed and a heat mediated antigen retrieval step in citrate buffer was performed. The sample was then blocked and incubated with the antibody for 1.5 hours at 22°C. An HRP conjugated goat anti-rabbit antibody was used as the secondary.



Immunofluorescence (fixed cells)

Image 3. ABIN6268948 staining lovo cells by ICC/IF. Cells were fixed with PFA and permeabilized in 0.1% saponin prior to blocking in 10% serum for 45 minutes at 37°C. The primary antibody was diluted 1/400 and incubated with the sample for 1 hour at 37°C. A Alexa Fluor® 594 conjugated goat polyclonal to rabbit IgG (H+L), diluted 1/600 was used as secondary antibody.