



[Go to Product page](#)

Datasheet for ABIN6262927
anti-LCAT antibody (C-Term)

1 Image

Overview

Quantity:	100 µL
Target:	LCAT
Binding Specificity:	C-Term
Reactivity:	Human, Mouse, Rat
Host:	Rabbit
Clonality:	Polyclonal
Conjugate:	This LCAT antibody is un-conjugated
Application:	Western Blotting (WB), ELISA

Product Details

Immunogen:	A synthesized peptide derived from human LCAT, corresponding to a region within C-terminal amino acids.
Isotype:	IgG
Specificity:	LCAT Antibody detects endogenous levels of total LCAT.
Predicted Reactivity:	Zebrafish,Bovine,Horse,Sheep,Rabbit,Dog,Chicken,Xenopus
Purification:	The antiserum was purified by peptide affinity chromatography using SulfoLink™ Coupling Resin (Thermo Fisher Scientific).

Target Details

Target:	LCAT
---------	------

Target Details

Alternative Name: LCAT ([LCAT Products](#))

Background: Description: Central enzyme in the extracellular metabolism of plasma lipoproteins. Synthesized mainly in the liver and secreted into plasma where it converts cholesterol and phosphatidylcholines (lecithins) to cholesteryl esters and lysophosphatidylcholines on the surface of high and low density lipoproteins (HDLs and LDLs) (PubMed:10329423, PubMed:19065001, PubMed:26195816). The cholesterol ester is then transported back to the liver. Has a preference for plasma 16:0-18:2 or 18:0-18:2 phosphatidylcholines (PubMed:8820107). Also produced in the brain by primary astrocytes, and esterifies free cholesterol on nascent APOE-containing lipoproteins secreted from glia and influences cerebral spinal fluid (CSF) APOE- and APOA1 levels. Together with APOE and the cholesterol transporter ABCA1, plays a key role in the maturation of glial-derived, nascent lipoproteins. Required for remodeling high-density lipoprotein particles into their spherical forms (PubMed:10722751).
Gene: LCAT

Molecular Weight: 50 kDa

Gene ID: 3931

UniProt: [P04180](#)

Pathways: [Lipid Metabolism](#)

Application Details

Application Notes: WB 1:1000-3000, ELISA(peptide) 1:20000-1:40000

Restrictions: For Research Use only

Handling

Format: Liquid

Concentration: 1 mg/mL

Buffer: Rabbit IgG in phosphate buffered saline , pH 7.4, 150 mM NaCl, 0.02 % sodium azide and 50 % glycerol.

Preservative: Sodium azide

Precaution of Use: This product contains Sodium azide: a POISONOUS AND HAZARDOUS SUBSTANCE which should be handled by trained staff only.

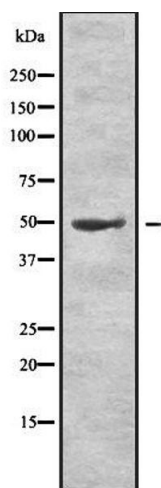
Storage: -20 °C

Handling

Storage Comment: Store at -20 °C. Stable for 12 months from date of receipt.

Expiry Date: 12 months

Images



Western Blotting

Image 1. Western blot analysis of LCAT using HuvEc whole cell lysates