



[Go to Product page](#)

Datasheet for ABIN6262942  
**anti-LDHB antibody (N-Term)**

3 Images

Overview

Quantity:	100 µL
Target:	LDHB
Binding Specificity:	N-Term
Reactivity:	Human, Rat, Mouse
Host:	Rabbit
Clonality:	Polyclonal
Conjugate:	This LDHB antibody is un-conjugated
Application:	Western Blotting (WB), Immunohistochemistry (IHC), Immunocytochemistry (ICC), Immunofluorescence (IF)

Product Details

Immunogen:	A synthesized peptide derived from human LDHB, corresponding to a region within N-terminal amino acids.
Isotype:	IgG
Specificity:	LDHB Antibody detects endogenous levels of total LDHB.
Predicted Reactivity:	Horse
Purification:	The antiserum was purified by peptide affinity chromatography using SulfoLink™ Coupling Resin (Thermo Fisher Scientific).

Target Details

Target:	LDHB
---------	------

## Target Details

---

Alternative Name:	<a href="#">LDHB (LDHB Products)</a>
Background:	Description: (S)-lactate + NAD <sup>+</sup> = pyruvate + NADH. Gene: LDHB
Molecular Weight:	35 kDa
Gene ID:	3945
UniProt:	<a href="#">P07195</a>
Pathways:	<a href="#">Warburg Effect</a>

## Application Details

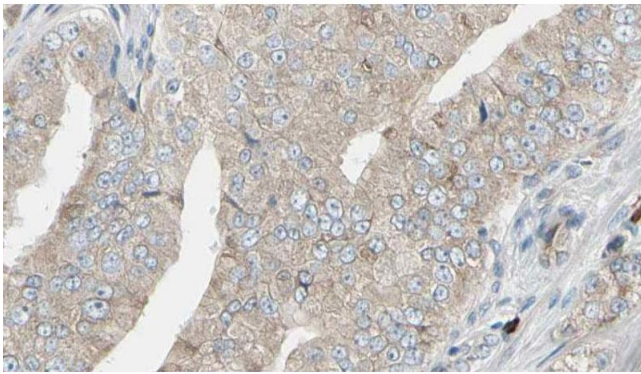
---

Application Notes:	WB 1:500-1:2000, IHC 1:50-1:200, IF/ICC 1:100-1:500
Restrictions:	For Research Use only

## Handling

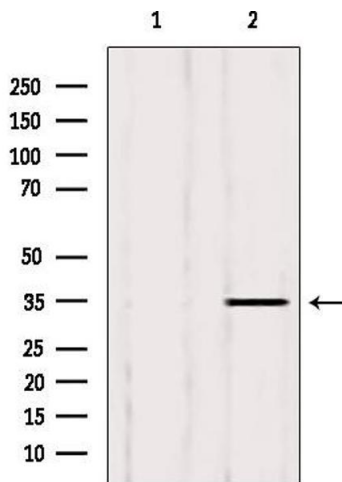
---

Format:	Liquid
Concentration:	1 mg/mL
Buffer:	Rabbit IgG in phosphate buffered saline , pH 7.4, 150 mM NaCl, 0.02 % sodium azide and 50 % glycerol.
Preservative:	Sodium azide
Precaution of Use:	This product contains Sodium azide: a POISONOUS AND HAZARDOUS SUBSTANCE which should be handled by trained staff only.
Storage:	-20 °C
Storage Comment:	Store at -20 °C. Stable for 12 months from date of receipt.
Expiry Date:	12 months



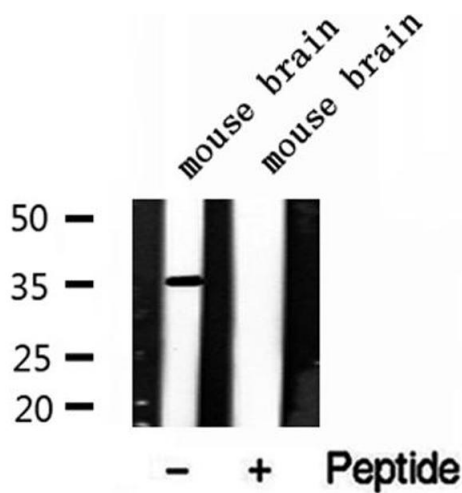
### Immunohistochemistry

**Image 1.** ABIN6272945 at 1/100 staining Human prostate tissue by IHC-P. The sample was formaldehyde fixed and a heat mediated antigen retrieval step in citrate buffer was performed. The sample was then blocked and incubated with the antibody for 1.5 hours at 22°C. An HRP conjugated goat anti-rabbit antibody was used as the secondary.



### Western Blotting

**Image 2.** Western blot analysis of extracts from 293, using LDHB antibody. Lane 1 was treated with the blocking peptide.



### Western Blotting

**Image 3.** Western blot analysis of extracts of mouse brain tissue, using LDHB antibody.