



Datasheet for ABIN6262951
anti-LETM1 antibody (Internal Region)



[Go to Product page](#)

3 Images

Overview

Quantity:	100 µL
Target:	LETM1
Binding Specificity:	Internal Region
Reactivity:	Human, Mouse, Rat
Host:	Rabbit
Clonality:	Polyclonal
Conjugate:	This LETM1 antibody is un-conjugated
Application:	Western Blotting (WB), Immunohistochemistry (IHC)

Product Details

Immunogen:	A synthesized peptide derived from human LETM1, corresponding to a region within the internal amino acids.
Isotype:	IgG
Specificity:	LETM1 Antibody detects endogenous levels of total LETM1.
Predicted Reactivity:	Pig,Zebrafish,Bovine,Horse,Sheep,Dog,Chicken,Xenopus
Purification:	The antiserum was purified by peptide affinity chromatography using SulfoLink™ Coupling Resin (Thermo Fisher Scientific).

Target Details

Target:	LETM1
---------	-------

Target Details

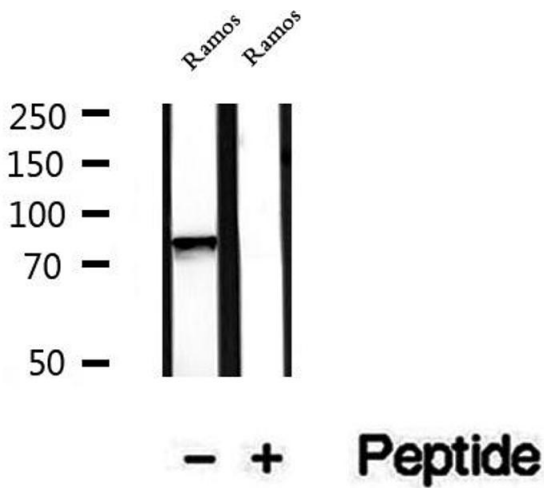
Alternative Name:	LETM1 (LETM1 Products)
Background:	<p>Description: Mitochondrial proton/calcium antiporter that mediates proton-dependent calcium efflux from mitochondrion (PubMed:19797662). Crucial for the maintenance of mitochondrial tubular networks and for the assembly of the supercomplexes of the respiratory chain (PubMed:18628306). Required for the maintenance of the tubular shape and cristae organization (PubMed:18628306). In contrast to SLC8B1/NCLX, does not constitute the major factor for mitochondrial calcium extrusion (PubMed:24898248).</p> <p>Gene: LETM1</p>
Molecular Weight:	83 kDa
Gene ID:	3954
UniProt:	O95202

Application Details

Application Notes:	WB 1:500-1:2000, IHC 1:50-1:200
Restrictions:	For Research Use only

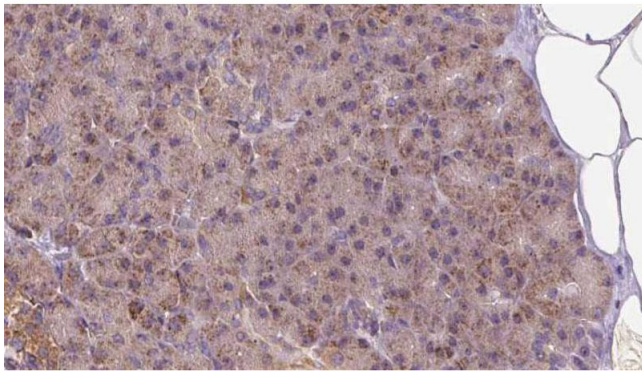
Handling

Format:	Liquid
Concentration:	1 mg/mL
Buffer:	Rabbit IgG in phosphate buffered saline , pH 7.4, 150 mM NaCl, 0.02 % sodium azide and 50 % glycerol.
Preservative:	Sodium azide
Precaution of Use:	This product contains Sodium azide: a POISONOUS AND HAZARDOUS SUBSTANCE which should be handled by trained staff only.
Storage:	-20 °C
Storage Comment:	Store at -20 °C. Stable for 12 months from date of receipt.
Expiry Date:	12 months



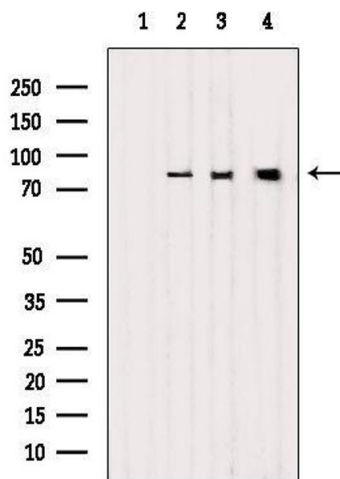
Western Blotting

Image 1. Western blot analysis of extracts of Ramos cells, using LETM1 antibody.



Immunohistochemistry

Image 2. ABIN6273261 at 1/100 staining Human pancreas cancer tissue by IHC-P. The sample was formaldehyde fixed and a heat mediated antigen retrieval step in citrate buffer was performed. The sample was then blocked and incubated with the antibody for 1.5 hours at 22°C. An HRP conjugated goat anti-rabbit antibody was used as the secondary.



Western Blotting

Image 3. Western blot analysis of extracts from various samples, using LETM1 Antibody. Lane 1: Sp2/0 treated with blocking peptide. Lane 2: Sp2/0; Lane 3: 293; Lane 4: Hela;