

Datasheet for ABIN6262952
anti-LETMD1 antibody (N-Term)

3 Images

[Go to Product page](#)

Overview

Quantity:	100 µL
Target:	LETMD1
Binding Specificity:	N-Term
Reactivity:	Human, Mouse, Rat
Host:	Rabbit
Clonality:	Polyclonal
Conjugate:	This LETMD1 antibody is un-conjugated
Application:	Immunohistochemistry (IHC), Western Blotting (WB), ELISA, Immunofluorescence (IF), Immunocytochemistry (ICC)

Product Details

Immunogen:	A synthesized peptide derived from human LETMD1, corresponding to a region within N-terminal amino acids.
Isotype:	IgG
Specificity:	LETMD1 Antibody detects endogenous levels of total LETMD1.
Predicted Reactivity:	Bovine,Horse,Sheep,Rabbit,Dog
Purification:	The antiserum was purified by peptide affinity chromatography using SulfoLink™ Coupling Resin (Thermo Fisher Scientific).

Target Details

Target:	LETMD1
---------	--------

Target Details

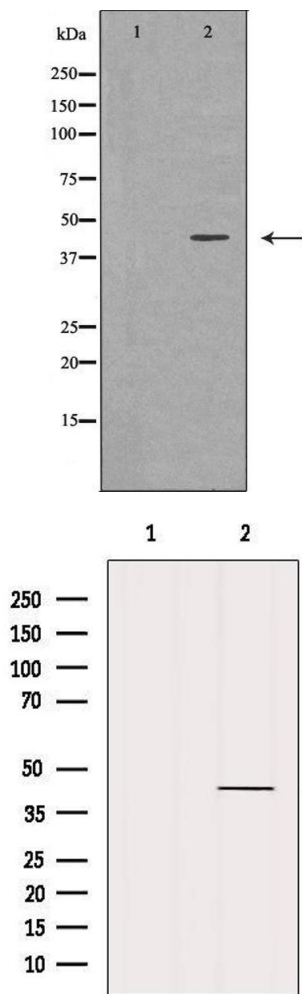
Alternative Name:	LETMD1 (LETMD1 Products)
Background:	Description: Involved in tumorigenesis and may function as a negative regulator of the p53/TP53. Gene: LETMD1
Molecular Weight:	42kDa
Gene ID:	25875
UniProt:	Q6P1Q0

Application Details

Application Notes:	WB 1:500-1:2000, IHC 1:50-1:200, IF/ICC 1:100-1:500, ELISA(peptide) 1:20000-1:40000
Restrictions:	For Research Use only

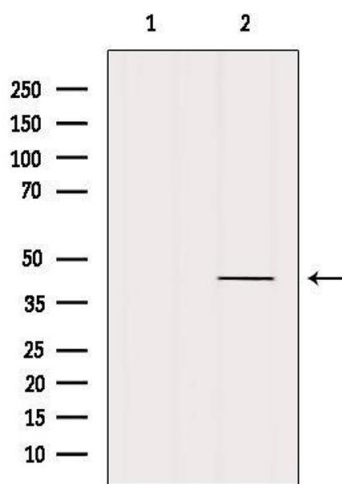
Handling

Format:	Liquid
Concentration:	1 mg/mL
Buffer:	Rabbit IgG in phosphate buffered saline , pH 7.4, 150 mM NaCl, 0.02 % sodium azide and 50 % glycerol.
Preservative:	Sodium azide
Precaution of Use:	This product contains Sodium azide: a POISONOUS AND HAZARDOUS SUBSTANCE which should be handled by trained staff only.
Storage:	-20 °C
Storage Comment:	Store at -20 °C. Stable for 12 months from date of receipt.
Expiry Date:	12 months



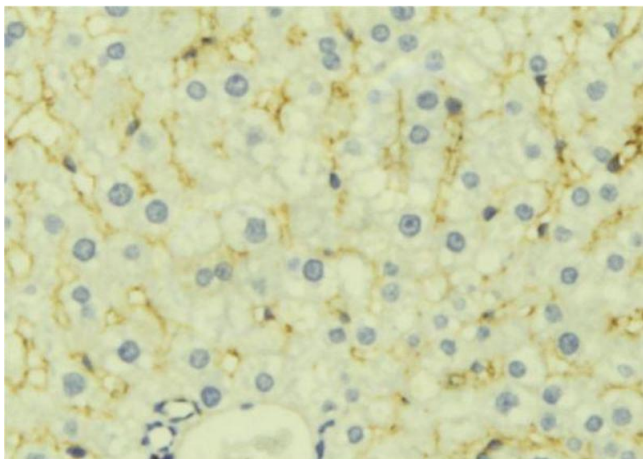
Western Blotting

Image 1. Western blot analysis of Mouse kidney lysate, using LETMD1 Antibody. The lane on the left is treated with the antigen-specific peptide.



Western Blotting

Image 2. Western blot analysis of extracts from Rat lung, using LETMD1 Antibody. The lane on the left was treated with blocking peptide.



Immunohistochemistry

Image 3. ABIN6277129 at 1/100 staining Mouse liver tissue by IHC-P. The sample was formaldehyde fixed and a heat mediated antigen retrieval step in citrate buffer was performed. The sample was then blocked and incubated with the antibody for 1.5 hours at 22°C. An HRP conjugated goat anti-rabbit antibody was used as the secondary