

Datasheet for ABIN6262980  
**anti-PPFIA1 antibody (C-Term)**[Go to Product page](#)

## 3 Images

## Overview

Quantity:	100 µL
Target:	PPFIA1
Binding Specificity:	C-Term
Reactivity:	Human, Mouse, Rat
Host:	Rabbit
Clonality:	Polyclonal
Conjugate:	This PPFIA1 antibody is un-conjugated
Application:	Western Blotting (WB), Immunohistochemistry (IHC)

## Product Details

Immunogen:	A synthesized peptide derived from human Liprin alpha 1, corresponding to a region within C-terminal amino acids.
Isotype:	IgG
Specificity:	Liprin alpha 1 Antibody detects endogenous levels of total Liprin alpha 1.
Predicted Reactivity:	Rabbit,Dog,Chicken,Xenopus
Purification:	The antiserum was purified by peptide affinity chromatography using SulfoLink™ Coupling Resin (Thermo Fisher Scientific).

## Target Details

Target:	PPFIA1
---------	--------

## Target Details

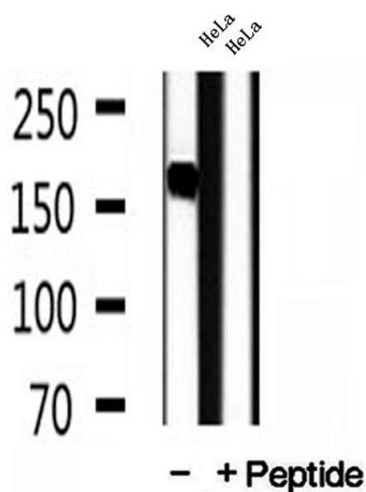
Alternative Name:	PPFIA1 ( <a href="#">PPFIA1 Products</a> )
Background:	Description: May regulate the disassembly of focal adhesions. May localize receptor-like tyrosine phosphatases type 2A at specific sites on the plasma membrane, possibly regulating their interaction with the extracellular environment and their association with substrates. Gene: PPFIA1
Molecular Weight:	160 kDa
Gene ID:	8500
UniProt:	<a href="#">Q13136</a>

## Application Details

Application Notes:	WB 1:500-1:2000, IHC 1:50-1:200
Restrictions:	For Research Use only

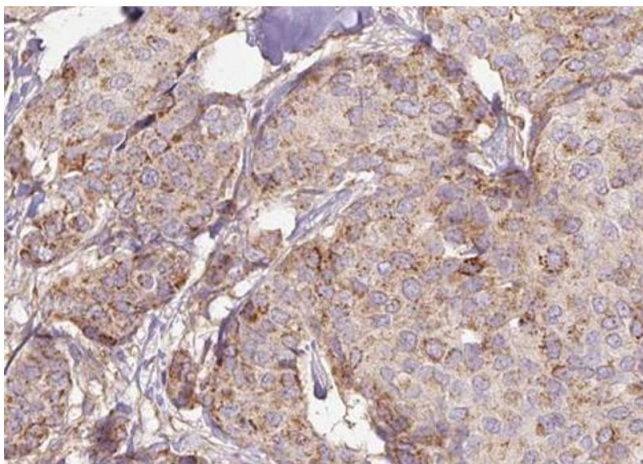
## Handling

Format:	Liquid
Concentration:	1 mg/mL
Buffer:	Rabbit IgG in phosphate buffered saline , pH 7.4, 150 mM NaCl, 0.02 % sodium azide and 50 % glycerol.
Preservative:	Sodium azide
Precaution of Use:	This product contains Sodium azide: a POISONOUS AND HAZARDOUS SUBSTANCE which should be handled by trained staff only.
Storage:	-20 °C
Storage Comment:	Store at -20 °C. Stable for 12 months from date of receipt.
Expiry Date:	12 months



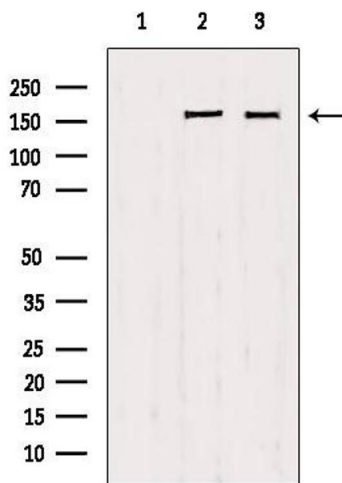
### Western Blotting

**Image 1.** Western blot analysis of extracts of HeLa cells, using Liprin alpha 1 antibody.



### Immunohistochemistry

**Image 2.** ABIN6272946 at 1/100 staining Human breast cancer tissue by IHC-P. The sample was formaldehyde fixed and a heat mediated antigen retrieval step in citrate buffer was performed. The sample was then blocked and incubated with the antibody for 1.5 hours at 22°C. An HRP conjugated goat anti-rabbit antibody was used as the secondary.



### Western Blotting

**Image 3.** Western blot analysis of extracts from various samples, using Liprin alpha 1 antibody. Lane 1: 293 treated with blocking peptide. Lane 2: 293; Lane 3: HeLa;