

Datasheet for ABIN6262981
anti-LITAF antibody (Internal Region)[Go to Product page](#)

2 Images

Overview

Quantity:	100 µL
Target:	LITAF
Binding Specificity:	Internal Region
Reactivity:	Human, Mouse, Rat
Host:	Rabbit
Clonality:	Polyclonal
Conjugate:	This LITAF antibody is un-conjugated
Application:	Western Blotting (WB), Immunohistochemistry (IHC), ELISA

Product Details

Immunogen:	A synthesized peptide derived from human LITAF, corresponding to a region within the internal amino acids.
Isotype:	IgG
Specificity:	LITAF Antibody detects endogenous levels of total LITAF.
Predicted Reactivity:	Pig,Bovine,Horse,Sheep,Rabbit,Dog,Chicken
Purification:	The antiserum was purified by peptide affinity chromatography using SulfoLink™ Coupling Resin (Thermo Fisher Scientific).

Target Details

Target:	LITAF
---------	-------

Target Details

Alternative Name:	LITAF (LITAF Products)
Background:	<p>Description: Plays a role in endosomal protein trafficking and in targeting proteins for lysosomal degradation (PubMed:23166352). Plays a role in targeting endocytosed EGFR and ERG3 for lysosomal degradation, and thereby helps downregulate downstream signaling cascades (PubMed:23166352). Helps recruit the ESCRT complex components TSG101, HGS and STAM to cytoplasmic membranes (PubMed:23166352). Probably plays a role in regulating protein degradation via its interaction with NEDD4 (PubMed:15776429). May also contribute to the regulation of gene expression in the nucleus (PubMed:10200294, PubMed:15793005). Binds DNA (in vitro) and may play a synergistic role with STAT6 in the nucleus in regulating the expression of various cytokines (PubMed:15793005). May regulate the expression of numerous cytokines, such as TNF, CCL2, CCL5, CXCL1, IL1A and IL10 (PubMed:10200294, PubMed:15793005).</p> <p>Gene: LITAF</p>
Molecular Weight:	17kDa
Gene ID:	9516
UniProt:	Q99732
Pathways:	Cellular Response to Molecule of Bacterial Origin

Application Details

Application Notes:	WB 1:500-1:2000, IHC 1:50-1:200, ELISA(peptide) 1:20000-1:40000
Restrictions:	For Research Use only

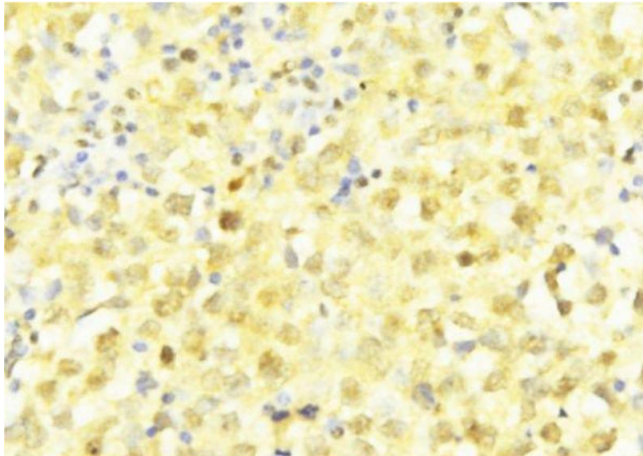
Handling

Format:	Liquid
Concentration:	1 mg/mL
Buffer:	Rabbit IgG in phosphate buffered saline , pH 7.4, 150 mM NaCl, 0.02 % sodium azide and 50 % glycerol.
Preservative:	Sodium azide
Precaution of Use:	This product contains Sodium azide: a POISONOUS AND HAZARDOUS SUBSTANCE which should be handled by trained staff only.
Storage:	-20 °C

Handling

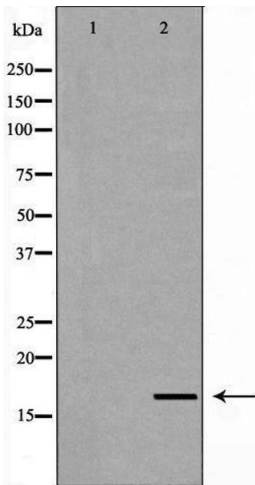
Storage Comment:	Store at -20 °C. Stable for 12 months from date of receipt.
Expiry Date:	12 months

Images



Immunohistochemistry

Image 1. ABIN6277600 at 1/100 staining Human breast cancer tissue by IHC-P. The sample was formaldehyde fixed and a heat mediated antigen retrieval step in citrate buffer was performed. The sample was then blocked and incubated with the antibody for 1.5 hours at 22°C. An HRP conjugated goat anti-rabbit antibody was used as the secondary



Western Blotting

Image 2. Western blot analysis of Hela whole cell lysates, using LITAF Antibody. The lane on the left is treated with the antigen-specific peptide.