

Datasheet for ABIN6262982

anti-SLC39A6 antibody (Internal Region)**2** Images[Go to Product page](#)

Overview

Quantity:	100 µL
Target:	SLC39A6
Binding Specificity:	Internal Region
Reactivity:	Human, Mouse, Rat
Host:	Rabbit
Clonality:	Polyclonal
Conjugate:	This SLC39A6 antibody is un-conjugated
Application:	Western Blotting (WB), Immunohistochemistry (IHC), Immunocytochemistry (ICC), Immunofluorescence (IF)

Product Details

Immunogen:	A synthesized peptide derived from human LIV-1/ZIP6, corresponding to a region within the internal amino acids.
Isotype:	IgG
Specificity:	LIV-1/ZIP6 Antibody detects endogenous levels of total LIV-1/ZIP6.
Predicted Reactivity:	Pig,Zebrafish,Bovine,Horse,Sheep,Rabbit,Dog,Chicken,Xenopus
Purification:	The antiserum was purified by peptide affinity chromatography using SulfoLink™ Coupling Resin (Thermo Fisher Scientific).

Target Details

Target:	SLC39A6
---------	---------

Target Details

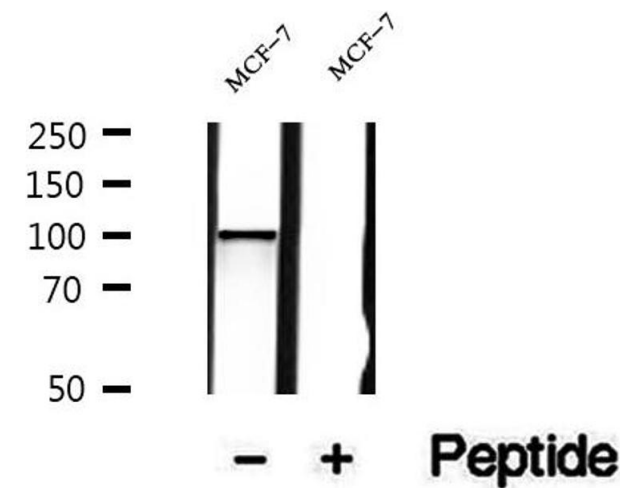
Alternative Name:	SLC39A6 (SLC39A6 Products)
Background:	Description: May act as a zinc-influx transporter. Gene: SLC39A6
Molecular Weight:	100 kDa
Gene ID:	25800
UniProt:	Q13433
Pathways:	Transition Metal Ion Homeostasis

Application Details

Application Notes:	WB 1:500-1:2000, IHC 1:50-1:200, IF/ICC 1:100-1:500
Restrictions:	For Research Use only

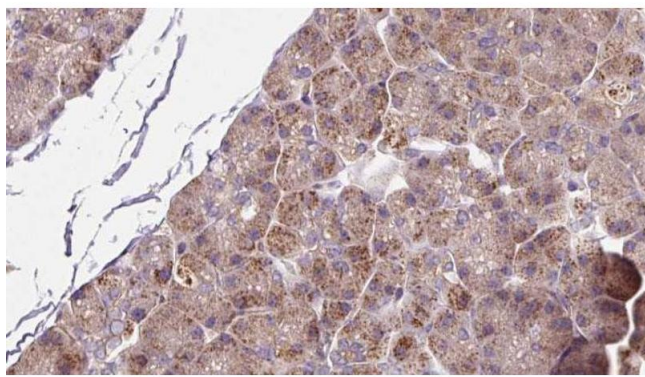
Handling

Format:	Liquid
Concentration:	1 mg/mL
Buffer:	Rabbit IgG in phosphate buffered saline , pH 7.4, 150 mM NaCl, 0.02 % sodium azide and 50 % glycerol.
Preservative:	Sodium azide
Precaution of Use:	This product contains Sodium azide: a POISONOUS AND HAZARDOUS SUBSTANCE which should be handled by trained staff only.
Storage:	-20 °C
Storage Comment:	Store at -20 °C. Stable for 12 months from date of receipt.
Expiry Date:	12 months



Western Blotting

Image 1. Western blot analysis of extracts of MCF-7 cells, using LIV-1/ZIP6 antibody.



Immunohistochemistry

Image 2. ABIN6273264 at 1/100 staining Human pancreas cancer tissue by IHC-P. The sample was formaldehyde fixed and a heat mediated antigen retrieval step in citrate buffer was performed. The sample was then blocked and incubated with the antibody for 1.5 hours at 22°C. An HRP conjugated goat anti-rabbit antibody was used as the secondary.