

Datasheet for ABIN6262991
anti-Leiomodin 1 antibody (C-Term)

3 Images

[Go to Product page](#)

Overview

Quantity:	100 µL
Target:	Leiomodin 1 (LMOD1)
Binding Specificity:	C-Term
Reactivity:	Human, Mouse, Rat
Host:	Rabbit
Clonality:	Polyclonal
Conjugate:	This Leiomodin 1 antibody is un-conjugated
Application:	Western Blotting (WB), Immunohistochemistry (IHC)

Product Details

Immunogen:	A synthesized peptide derived from human LMOD1, corresponding to a region within C-terminal amino acids.
Isotype:	IgG
Specificity:	LMOD1 Antibody detects endogenous levels of total LMOD1.
Predicted Reactivity:	Pig,Bovine,Horse,Rabbit,Chicken
Purification:	The antiserum was purified by peptide affinity chromatography using SulfoLink™ Coupling Resin (Thermo Fisher Scientific).

Target Details

Target:	Leiomodin 1 (LMOD1)
---------	---------------------

Target Details

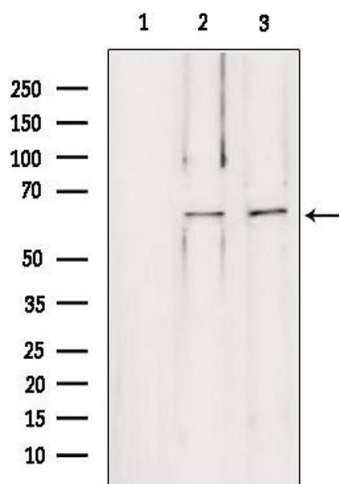
Alternative Name:	LMOD1 (LMOD1 Products)
Background:	Description: Mediates nucleation of actin filaments. Gene: LMOD1
Molecular Weight:	85 kDa or 64 kDa
Gene ID:	25802
UniProt:	P29536

Application Details

Application Notes:	WB 1:500-1:2000, IHC 1:50-1:200
Restrictions:	For Research Use only

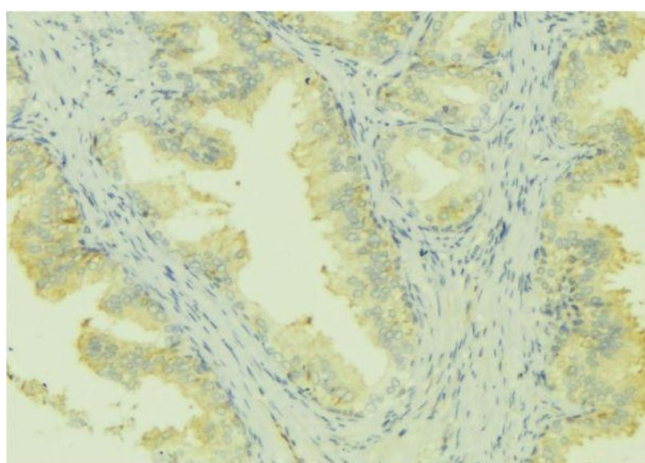
Handling

Format:	Liquid
Concentration:	1 mg/mL
Buffer:	Rabbit IgG in phosphate buffered saline , pH 7.4, 150 mM NaCl, 0.02 % sodium azide and 50 % glycerol.
Preservative:	Sodium azide
Precaution of Use:	This product contains Sodium azide: a POISONOUS AND HAZARDOUS SUBSTANCE which should be handled by trained staff only.
Storage:	-20 °C
Storage Comment:	Store at -20 °C. Stable for 12 months from date of receipt.
Expiry Date:	12 months



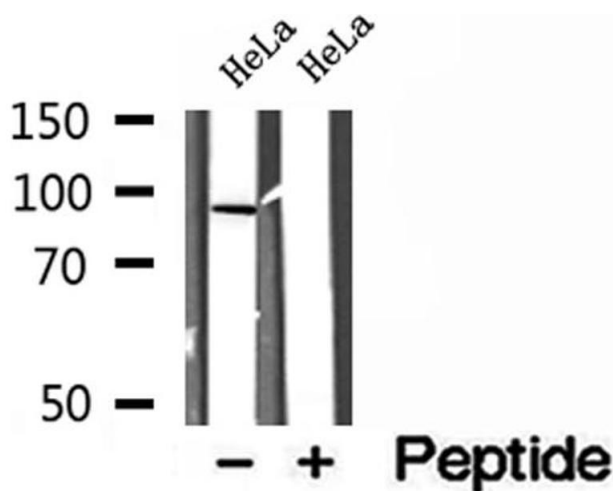
Western Blotting

Image 1. Western blot analysis of extracts from various samples, using LMOD1 antibody. Lane 1: Mouse Myeloma cell treated with blocking peptide. Lane 2: Mouse Myeloma cell; Lane 3: HepG2;



Immunohistochemistry

Image 2. ABIN6273004 at 1/100 staining Mouse colon tissue by IHC-P. The sample was formaldehyde fixed and a heat mediated antigen retrieval step in citrate buffer was performed. The sample was then blocked and incubated with the antibody for 1.5 hours at 22°C. An HRP conjugated goat anti-rabbit antibody was used as the secondary.



Western Blotting

Image 3. Western blot analysis of extracts of HeLa cells, using LMOD1 antibody.