



[Go to Product page](#)

Datasheet for ABIN6263009  
**anti-LRP6 antibody (C-Term)**

2 Images

1 Publication

### Overview

Quantity:	100 µL
Target:	LRP6
Binding Specificity:	C-Term
Reactivity:	Human, Mouse, Rat
Host:	Rabbit
Clonality:	Polyclonal
Conjugate:	This LRP6 antibody is un-conjugated
Application:	Western Blotting (WB), Immunohistochemistry (IHC), ELISA

### Product Details

Immunogen:	A synthesized peptide derived from human LRP6, corresponding to a region within C-terminal amino acids.
Isotype:	IgG
Specificity:	LRP6 Antibody detects endogenous levels of total LRP6.
Predicted Reactivity:	Pig,Zebrafish,Bovine,Horse,Sheep,Rabbit,Dog,Chicken,Xenopus
Purification:	The antiserum was purified by peptide affinity chromatography using SulfoLink™ Coupling Resin (Thermo Fisher Scientific).

### Target Details

Target:	LRP6
---------	------

## Target Details

---

Alternative Name: [LRP6 \(LRP6 Products\)](#)

---

Background: Description: Component of the Wnt-Fzd-LRP5-LRP6 complex that triggers beta-catenin signaling through inducing aggregation of receptor-ligand complexes into ribosome-sized signalsomes. Cell-surface coreceptor of Wnt/beta-catenin signaling, which plays a pivotal role in bone formation. The Wnt-induced Fzd/LRP6 coreceptor complex recruits DVL1 polymers to the plasma membrane which, in turn, recruits the AXIN1/GSK3B-complex to the cell surface promoting the formation of signalsomes and inhibiting AXIN1/GSK3-mediated phosphorylation and destruction of beta-catenin. Required for posterior patterning of the epiblast during gastrulation (By similarity).

Gene: LRP6

---

Molecular Weight: 180 kDa

---

Gene ID: 4040

---

UniProt: [O75581](#)

---

Pathways: [WNT Signaling](#), [Tube Formation](#)

---

## Application Details

---

Application Notes: WB 1:1000-3000, IHC 1:200, ELISA(peptide) 1:20000-1:40000

---

Restrictions: For Research Use only

---

## Handling

---

Format: Liquid

---

Concentration: 1 mg/mL

---

Buffer: Rabbit IgG in phosphate buffered saline , pH 7.4, 150 mM NaCl, 0.02 % sodium azide and 50 % glycerol.

---

Preservative: Sodium azide

---

Precaution of Use: This product contains Sodium azide: a POISONOUS AND HAZARDOUS SUBSTANCE which should be handled by trained staff only.

---

Storage: -20 °C

---

Storage Comment: Store at -20 °C. Stable for 12 months from date of receipt.

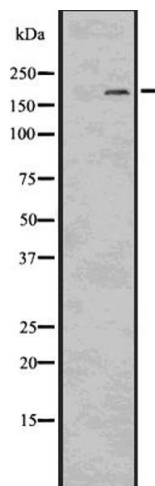
---

Expiry Date: 12 months

---

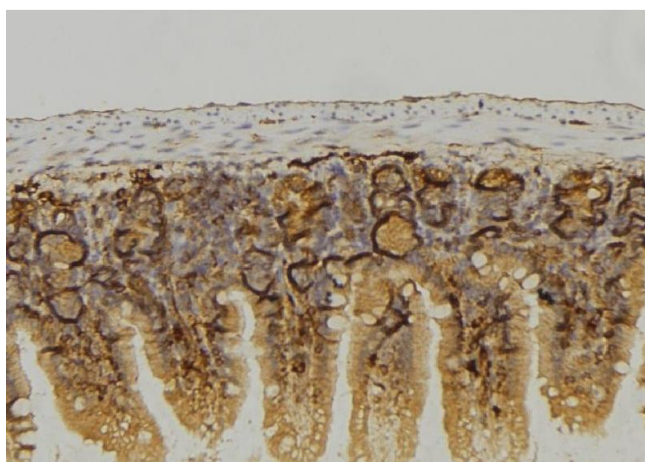
Product cited in: Zhu, Wang, Zhao, Zhang, Wu, Wang, Hu: "Rottlerin as a novel chemotherapy agent for adrenocortical carcinoma." in: **Oncotarget**, Vol. 8, Issue 14, pp. 22825-22834, (2017) ([PubMed](#)).

Images



**Western Blotting**

**Image 1.** Western blot analysis of LRP6 using HepG2 whole cell lysates



**Immunohistochemistry**

**Image 2.** ABIN6274075 at 1/100 staining Mouse colon tissue by IHC-P. The sample was formaldehyde fixed and a heat mediated antigen retrieval step in citrate buffer was performed. The sample was then blocked and incubated with the antibody for 1.5 hours at 22°C. An HRP conjugated goat anti-rabbit antibody was used as the secondary