

Datasheet for ABIN6263014  
**anti-LSM1 antibody (N-Term)**[Go to Product page](#)

## 1 Image

## Overview

Quantity:	100 µL
Target:	LSM1
Binding Specificity:	N-Term
Reactivity:	Human, Mouse
Host:	Rabbit
Clonality:	Polyclonal
Conjugate:	This LSM1 antibody is un-conjugated
Application:	Western Blotting (WB), ELISA

## Product Details

Immunogen:	A synthesized peptide derived from human LSM1, corresponding to a region within N-terminal amino acids.
Isotype:	IgG
Specificity:	LSM1 Antibody detects endogenous levels of total LSM1.
Predicted Reactivity:	Pig,Zebrafish,Bovine,Horse,Sheep,Rabbit,Dog,Chicken,Xenopus
Purification:	The antiserum was purified by peptide affinity chromatography using SulfoLink™ Coupling Resin (Thermo Fisher Scientific).

## Target Details

Target:	LSM1
---------	------

## Target Details

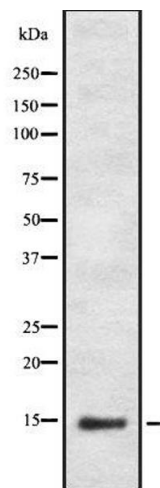
Alternative Name:	LSM1 ( <a href="#">LSM1 Products</a> )
Background:	Description: Plays a role in the degradation of histone mRNAs, the only eukaryotic mRNAs that are not polyadenylated (PubMed:18172165). Probably also part of an LSm subunits-containing complex involved in the general process of mRNA degradation (By similarity). Gene: LSM1
Molecular Weight:	15 kDa
Gene ID:	27257
UniProt:	<a href="#">O15116</a>

## Application Details

Application Notes:	WB 1:1000-3000, ELISA(peptide) 1:20000-1:40000
Restrictions:	For Research Use only

## Handling

Format:	Liquid
Concentration:	1 mg/mL
Buffer:	Rabbit IgG in phosphate buffered saline , pH 7.4, 150 mM NaCl, 0.02 % sodium azide and 50 % glycerol.
Preservative:	Sodium azide
Precaution of Use:	This product contains Sodium azide: a POISONOUS AND HAZARDOUS SUBSTANCE which should be handled by trained staff only.
Storage:	-20 °C
Storage Comment:	Store at -20 °C. Stable for 12 months from date of receipt.
Expiry Date:	12 months



Western Blotting

**Image 1.** Western blot analysis of LSM1 using Jurkat whole cell lysates