



[Go to Product page](#)

Datasheet for ABIN6263015

## anti-LSM2 antibody (Internal Region)

### 1 Image

#### Overview

|                      |                                     |
|----------------------|-------------------------------------|
| Quantity:            | 100 µL                              |
| Target:              | LSM2                                |
| Binding Specificity: | Internal Region                     |
| Reactivity:          | Human, Mouse, Rat                   |
| Host:                | Rabbit                              |
| Clonality:           | Polyclonal                          |
| Conjugate:           | This LSM2 antibody is un-conjugated |
| Application:         | Western Blotting (WB), ELISA        |

#### Product Details

|                       |   |
|-----------------------|---|
| Immunogen:            | A synthesized peptide derived from human LSM2, corresponding to a region within the internal amino acids.                 |
| Isotype:              | IgG   |
| Specificity:          | LSM2 Antibody detects endogenous levels of total LSM2.  |
| Predicted Reactivity: | Pig,Bovine,Horse,Sheep,Rabbit,Xenopus   |
| Purification:         | The antiserum was purified by peptide affinity chromatography using SulfoLink™ Coupling Resin (Thermo Fisher Scientific). |

#### Target Details

|         |      |
|---------|------|
| Target: | LSM2 |
|---------|------|

## Target Details

---

|                   |   |
|-------------------|---|
| Alternative Name: | LSM2 ( <a href="#">LSM2 Products</a> )  |
| Background:       | Description: Binds specifically to the 3'-terminal U-tract of U6 snRNA. May be involved in pre-mRNA splicing.<br>Gene: LSM2 |
| Molecular Weight: | 11 kDa  |
| Gene ID:          | 57819   |
| UniProt:          | <a href="#">Q9Y333</a>  |
| Pathways:         | <a href="#">Ribonucleoprotein Complex Subunit Organization</a>  |

## Application Details

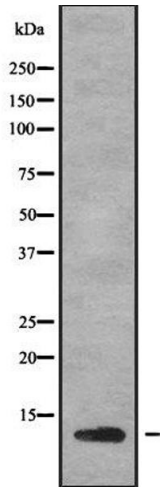
---

|                    |  |
|--------------------|--|
| Application Notes: | WB 1:1000-3000, ELISA(peptide) 1:20000-1:40000 |
| Restrictions:      | For Research Use only                          |

## Handling

---

|                    |  |
|--------------------|--|
| Format:            | Liquid   |
| Concentration:     | 1 mg/mL  |
| Buffer:            | Rabbit IgG in phosphate buffered saline , pH 7.4, 150 mM NaCl, 0.02 % sodium azide and 50 % glycerol.                  |
| Preservative:      | Sodium azide   |
| Precaution of Use: | This product contains Sodium azide: a POISONOUS AND HAZARDOUS SUBSTANCE which should be handled by trained staff only. |
| Storage:           | -20 °C   |
| Storage Comment:   | Store at -20 °C. Stable for 12 months from date of receipt.  |
| Expiry Date:       | 12 months  |



### Western Blotting

**Image 1.** Western blot analysis of LSM2 using Jurkat whole cell lysates