

Datasheet for ABIN6263028
anti-Sca-1/Ly-6A/E antibody[Go to Product page](#)

1 Image

Overview

Quantity:	100 µL
Target:	Sca-1/Ly-6A/E (Ly6a)
Reactivity:	Mouse, Rat, Human
Host:	Rabbit
Clonality:	Polyclonal
Conjugate:	This Sca-1/Ly-6A/E antibody is un-conjugated
Application:	Western Blotting (WB), ELISA

Product Details

Immunogen:	A synthesized peptide derived from human LY6A
Isotype:	IgG
Specificity:	LY6A Antibody detects endogenous levels of total LY6A
Cross-Reactivity:	Human, Mouse (Murine), Rat (Rattus)
Purification:	The antiserum was purified by peptide affinity chromatography using SulfoLink™ Coupling Resin (Thermo Fisher Scientific).

Target Details

Target:	Sca-1/Ly-6A/E (Ly6a)
Alternative Name:	LY6A (Ly6a Products)
Molecular Weight:	14 kDa

Target Details

UniProt: [P05533](#)

Pathways: [Sensory Perception of Sound, Activated T Cell Proliferation](#)

Application Details

Application Notes: WB 1:1000-3000

Restrictions: For Research Use only

Handling

Format: Liquid

Concentration: 1 mg/mL

Buffer: Rabbit IgG in phosphate buffered saline , pH 7.4, 150 mM NaCl, 0.02 % sodium azide and 50 % glycerol.

Preservative: Sodium azide

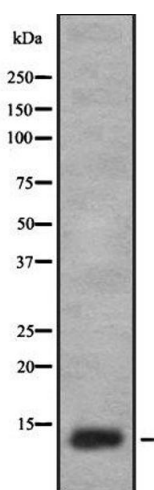
Precaution of Use: This product contains Sodium azide: a POISONOUS AND HAZARDOUS SUBSTANCE which should be handled by trained staff only.

Storage: -20 °C

Storage Comment: Store at -20 °C. Stable for 12 months from date of receipt

Expiry Date: 12 months

Images



Western Blotting

Image 1. Western blot analysis of LY6A using A549 whole cell lysates