

Datasheet for ABIN6263035  
**anti-LYZL6 antibody (Internal Region)**

## 2 Images

[Go to Product page](#)

## Overview

Quantity:	100 µL
Target:	LYZL6
Binding Specificity:	Internal Region
Reactivity:	Human, Mouse, Rat
Host:	Rabbit
Clonality:	Polyclonal
Conjugate:	This LYZL6 antibody is un-conjugated
Application:	Western Blotting (WB), ELISA, Immunohistochemistry (IHC), Immunofluorescence (IF), Immunocytochemistry (ICC)

## Product Details

Immunogen:	A synthesized peptide derived from human LYZL6, corresponding to a region within the internal amino acids.
Isotype:	IgG
Specificity:	LYZL6 Antibody detects endogenous levels of total LYZL6.
Purification:	The antiserum was purified by peptide affinity chromatography using SulfoLink™ Coupling Resin (Thermo Fisher Scientific).

## Target Details

Target:	LYZL6
Alternative Name:	LYZL6 ( <a href="#">LYZL6 Products</a> )

## Target Details

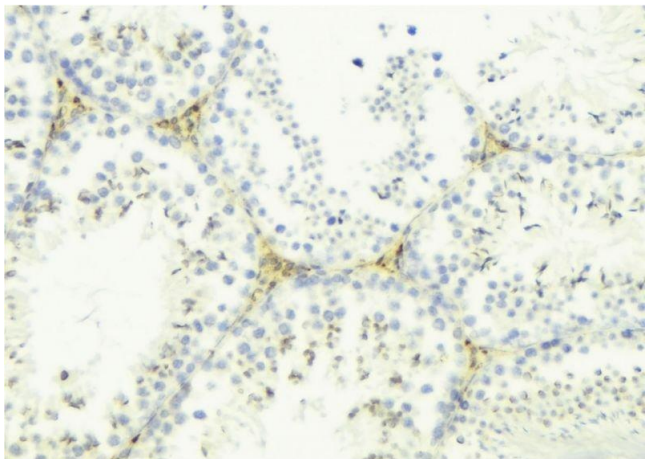
Background:	Description: May be involved sperm-egg plasma membrane adhesion and fusion during fertilization (PubMed:28182716). Exhibits bacteriolytic activity in vitro against Micrococcus luteus and Staphylococcus aureus (PubMed:28182716, PubMed:24013621). Shows weak bacteriolytic activity against Gram-positive bacteria at physiological pH (PubMed:28182716). Bacteriolytic activity is pH-dependent, with a maximum at around pH 5.6 (PubMed:28182716). Gene: LYZL6
Molecular Weight:	17kDa
Gene ID:	57151
UniProt:	<a href="#">O75951</a>

## Application Details

Application Notes:	WB 1:500-1:2000, IHC 1:50-1:200, IF/ICC 1:100-1:500, ELISA(peptide) 1:20000-1:40000
Restrictions:	For Research Use only

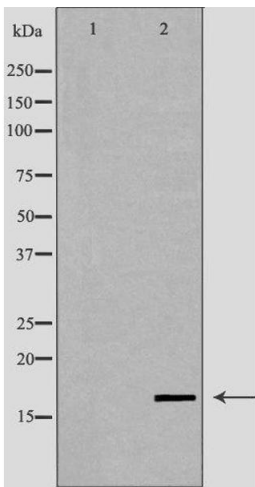
## Handling

Format:	Liquid
Concentration:	1 mg/mL
Buffer:	Rabbit IgG in phosphate buffered saline , pH 7.4, 150 mM NaCl, 0.02 % sodium azide and 50 % glycerol.
Preservative:	Sodium azide
Precaution of Use:	This product contains Sodium azide: a POISONOUS AND HAZARDOUS SUBSTANCE which should be handled by trained staff only.
Storage:	-20 °C
Storage Comment:	Store at -20 °C. Stable for 12 months from date of receipt.
Expiry Date:	12 months



Immunohistochemistry

**Image 1.** ABIN6276481 at 1/100 staining Mouse testis tissue by IHC-P. The sample was formaldehyde fixed and a heat mediated antigen retrieval step in citrate buffer was performed. The sample was then blocked and incubated with the antibody for 1.5 hours at 22°C. An HRP conjugated goat anti-rabbit antibody was used as the secondary



Western Blotting

**Image 2.** Western blot analysis of human testis lysate using LYZL6 antibody. The lane on the left is treated with the antigen-specific peptide.