



[Go to Product page](#)

Datasheet for ABIN6263063

anti-MAGEB2 antibody (C-Term)

1 Image

Overview

Quantity:	100 µL
Target:	MAGEB2
Binding Specificity:	C-Term
Reactivity:	Human
Host:	Rabbit
Clonality:	Polyclonal
Conjugate:	This MAGEB2 antibody is un-conjugated
Application:	Western Blotting (WB), ELISA

Product Details

Immunogen:	A synthesized peptide derived from human MAGEB2, corresponding to a region within C-terminal amino acids.
Isotype:	IgG
Specificity:	MAGEB2 Antibody detects endogenous levels of total MAGEB2.
Purification:	The antiserum was purified by peptide affinity chromatography using SulfoLink™ Coupling Resin (Thermo Fisher Scientific).

Target Details

Target:	MAGEB2
Alternative Name:	MAGEB2 (MAGEB2 Products)

Target Details

Background: Description: May enhance ubiquitin ligase activity of RING-type zinc finger-containing E3 ubiquitin-protein ligases. Proposed to act through recruitment and/or stabilization of the Ubl-conjugating enzyme (E2) at the E3:substrate complex.
Gene: MAGEB2

Molecular Weight: 35 kDa

Gene ID: 4113

UniProt: [O15479](#)

Application Details

Application Notes: WB 1:1000-3000, ELISA(peptide) 1:20000-1:40000

Restrictions: For Research Use only

Handling

Format: Liquid

Concentration: 1 mg/mL

Buffer: Rabbit IgG in phosphate buffered saline , pH 7.4, 150 mM NaCl, 0.02 % sodium azide and 50 % glycerol.

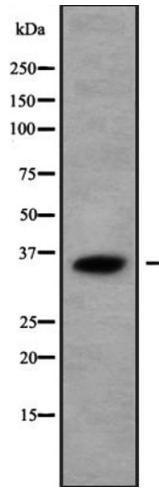
Preservative: Sodium azide

Precaution of Use: This product contains Sodium azide: a POISONOUS AND HAZARDOUS SUBSTANCE which should be handled by trained staff only.

Storage: -20 °C

Storage Comment: Store at -20 °C. Stable for 12 months from date of receipt.

Expiry Date: 12 months



Western Blotting

Image 1. Western blot analysis of MAGB2 using HeLa whole cell lysates