



[Go to Product page](#)

Datasheet for ABIN6263073

## anti-MAGEE2 antibody (Internal Region)

### 1 Image

#### Overview

Quantity:	100 µL
Target:	MAGEE2
Binding Specificity:	Internal Region
Reactivity:	Human, Mouse, Rat
Host:	Rabbit
Clonality:	Polyclonal
Conjugate:	This MAGEE2 antibody is un-conjugated
Application:	Western Blotting (WB), ELISA, Immunohistochemistry (IHC)

#### Product Details

Immunogen:	A synthesized peptide derived from human MAGE2, corresponding to a region within the internal amino acids.
Isotype:	IgG
Specificity:	MAGE2 Antibody detects endogenous levels of total MAGE2.
Predicted Reactivity:	Pig,Bovine,Horse,Sheep,Dog
Purification:	The antiserum was purified by peptide affinity chromatography using SulfoLink™ Coupling Resin (Thermo Fisher Scientific).

#### Target Details

Target:	MAGEE2
---------	--------

## Target Details

---

Alternative Name: [MAGEE2 \(MAGEE2 Products\)](#)

Background: Gene: MAGEE2

Molecular Weight: 60 kDa

Gene ID: 139599

UniProt: [Q8TD90](#)

## Application Details

---

Application Notes: WB 1:1000-3000, IHC 1:50-1:200, ELISA(peptide) 1:20000-1:40000

Restrictions: For Research Use only

## Handling

---

Format: Liquid

Concentration: 1 mg/mL

Buffer: Rabbit IgG in phosphate buffered saline , pH 7.4, 150 mM NaCl, 0.02 % sodium azide and 50 % glycerol.

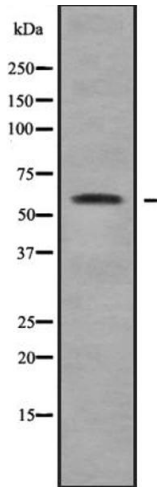
Preservative: Sodium azide

Precaution of Use: This product contains Sodium azide: a POISONOUS AND HAZARDOUS SUBSTANCE which should be handled by trained staff only.

Storage: -20 °C

Storage Comment: Store at -20 °C. Stable for 12 months from date of receipt.

Expiry Date: 12 months



### Western Blotting

**Image 1.** Western blot analysis of MAGE2 using COLO205 whole cell lysates