



[Go to Product page](#)

Datasheet for ABIN6263078

## anti-MAGEF1 antibody (Internal Region)

### 2 Images

#### Overview

Quantity:	100 µL
Target:	MAGEF1
Binding Specificity:	Internal Region
Reactivity:	Human, Mouse
Host:	Rabbit
Clonality:	Polyclonal
Conjugate:	This MAGEF1 antibody is un-conjugated
Application:	Western Blotting (WB), ELISA, Immunohistochemistry (IHC)

#### Product Details

Immunogen:	A synthesized peptide derived from human MAGF1, corresponding to a region within the internal amino acids.
Isotype:	IgG
Specificity:	MAGF1 Antibody detects endogenous levels of total MAGF1.
Predicted Reactivity:	Dog
Purification:	The antiserum was purified by peptide affinity chromatography using SulfoLink™ Coupling Resin (Thermo Fisher Scientific).

#### Target Details

Target:	MAGEF1
---------	--------

## Target Details

---

Alternative Name:	MAGEF1 ( <a href="#">MAGEF1 Products</a> )
Background:	<p>Description: Enhances ubiquitin ligase activity of RING-type zinc finger-containing E3 ubiquitin ligases. Proposed to act through recruitment and/or stabilization of the E2 ubiquitin-conjugating enzyme at the E3:substrate complex. MAGEF1-NSMCE1 ubiquitin ligase complex promotes proteasomal degradation of MMS19, a key component of the cytosolic iron-sulfur protein assembly (CIA) machinery. Down-regulation of MMS19 impairs the activity of several DNA repair and metabolism enzymes such as ERCC2/XPD, FANCI, RTEL1 and POLD1 that require iron-sulfur clusters as cofactors. May negatively regulate genome integrity by inhibiting homologous recombination-mediated double-strand break DNA repair (PubMed:29225034).</p> <p>Gene: MAGEF1</p>
Molecular Weight:	35 kDa
Gene ID:	64110
UniProt:	<a href="#">Q9HAY2</a>

## Application Details

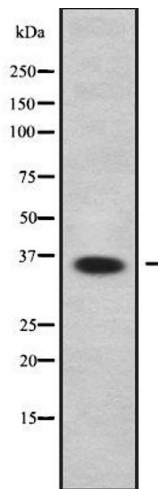
---

Application Notes:	WB 1:1000-3000, IHC 1:200, ELISA(peptide) 1:20000-1:40000
Restrictions:	For Research Use only

## Handling

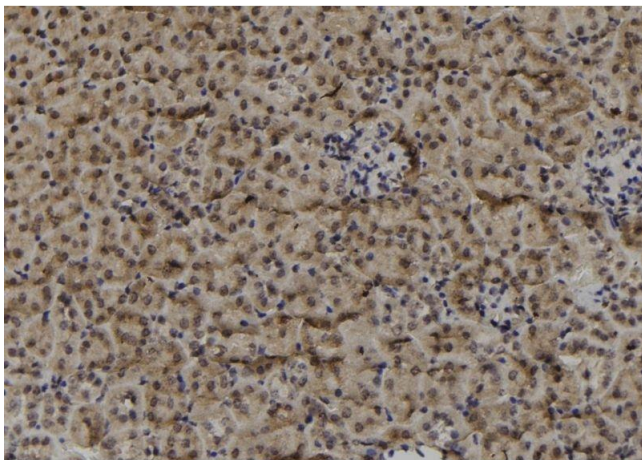
---

Format:	Liquid
Concentration:	1 mg/mL
Buffer:	Rabbit IgG in phosphate buffered saline , pH 7.4, 150 mM NaCl, 0.02 % sodium azide and 50 % glycerol.
Preservative:	Sodium azide
Precaution of Use:	This product contains Sodium azide: a POISONOUS AND HAZARDOUS SUBSTANCE which should be handled by trained staff only.
Storage:	-20 °C
Storage Comment:	Store at -20 °C. Stable for 12 months from date of receipt.
Expiry Date:	12 months



### Western Blotting

**Image 1.** Western blot analysis of MAGF1 using HepG2 whole cell lysates



### Immunohistochemistry

**Image 2.** ABIN6278934 at 1/100 staining Mouse kidney tissue by IHC-P. The sample was formaldehyde fixed and a heat mediated antigen retrieval step in citrate buffer was performed. The sample was then blocked and incubated with the antibody for 1.5 hours at 22°C. An HRP conjugated goat anti-rabbit antibody was used as the secondary