



[Go to Product page](#)

Datasheet for ABIN6263085
anti-MAL antibody (N-Term)

1 Image

Overview

| | |
|----------------------|--|
| Quantity: | 100 µL |
| Target: | MAL |
| Binding Specificity: | N-Term |
| Reactivity: | Human, Mouse, Rat |
| Host: | Rabbit |
| Clonality: | Polyclonal |
| Conjugate: | This MAL antibody is un-conjugated |
| Application: | ELISA, Western Blotting (WB), Immunofluorescence (IF), Immunocytochemistry (ICC) |

Product Details

| | |
|-----------------------|---|
| Immunogen: | A synthesized peptide derived from human MAL, corresponding to a region within N-terminal amino acids. |
| Isotype: | IgG |
| Specificity: | MAL Antibody detects endogenous levels of total MAL. |
| Predicted Reactivity: | Bovine,Rabbit,Dog |
| Purification: | The antiserum was purified by peptide affinity chromatography using SulfoLink™ Coupling Resin (Thermo Fisher Scientific). |

Target Details

| | |
|---------|-----|
| Target: | MAL |
|---------|-----|

Target Details

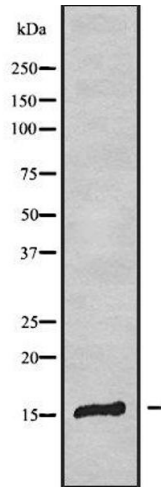
| | |
|-------------------|---|
| Alternative Name: | MAL (MAL Products) |
| Background: | Description: Could be an important component in vesicular trafficking cycling between the Golgi complex and the apical plasma membrane. Could be involved in myelin biogenesis and/or myelin function. Gene: MAL |
| Molecular Weight: | 17 kDa |
| Gene ID: | 4118 |
| UniProt: | P21145 |
| Pathways: | Asymmetric Protein Localization |

Application Details

| | |
|--------------------|--|
| Application Notes: | WB 1:1000-3000, IF/ICC 1:100-1:500, ELISA(peptide) 1:20000-1:40000 |
| Restrictions: | For Research Use only |

Handling

| | |
|--------------------|--|
| Format: | Liquid |
| Concentration: | 1 mg/mL |
| Buffer: | Rabbit IgG in phosphate buffered saline , pH 7.4, 150 mM NaCl, 0.02 % sodium azide and 50 % glycerol. |
| Preservative: | Sodium azide |
| Precaution of Use: | This product contains Sodium azide: a POISONOUS AND HAZARDOUS SUBSTANCE which should be handled by trained staff only. |
| Storage: | -20 °C |
| Storage Comment: | Store at -20 °C. Stable for 12 months from date of receipt. |
| Expiry Date: | 12 months |



Western Blotting

Image 1. Western blot analysis of MAL using COLO205 whole cell lysates