

Datasheet for ABIN6263087

**anti-Mammaglobin A antibody (Internal Region)**[Go to Product page](#)

## 4 Images

## Overview

Quantity:	100 µL
Target:	Mammaglobin A (SCGB2A2)
Binding Specificity:	Internal Region
Reactivity:	Human, Rat, Mouse
Host:	Rabbit
Clonality:	Polyclonal
Conjugate:	This Mammaglobin A antibody is un-conjugated
Application:	Western Blotting (WB), Immunohistochemistry (IHC), ELISA, Immunofluorescence (IF), Immunocytochemistry (ICC)

## Product Details

Immunogen:	A synthesized peptide derived from human Mammaglobin, corresponding to a region within the internal amino acids.
Isotype:	IgG
Specificity:	Mammaglobin Antibody detects endogenous levels of total Mammaglobin.
Purification:	The antiserum was purified by peptide affinity chromatography using SulfoLink™ Coupling Resin (Thermo Fisher Scientific).

## Target Details

Target:	Mammaglobin A (SCGB2A2)
Alternative Name:	SCGB2A2 ( <a href="#">SCGB2A2 Products</a> )

## Target Details

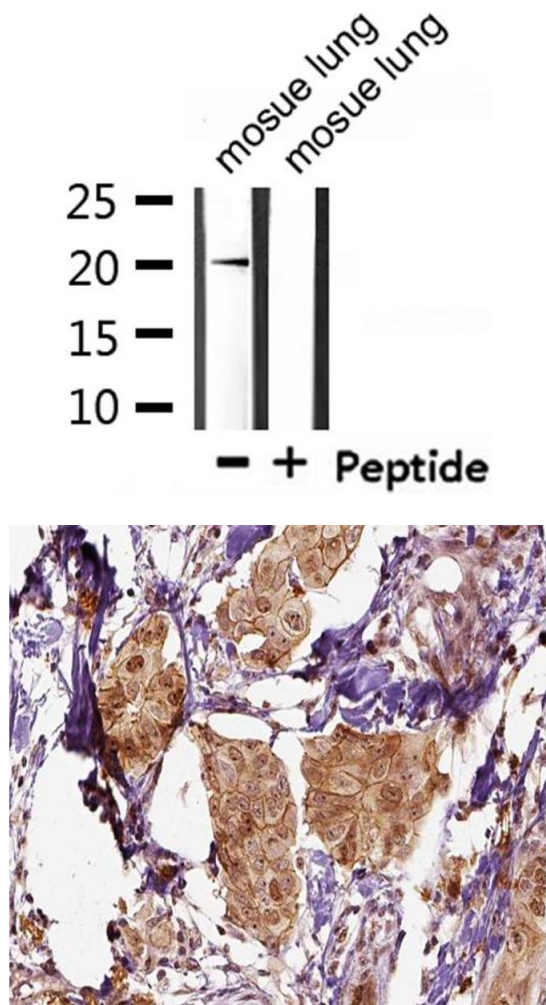
Background:	Gene: SCGB2A2
Molecular Weight:	20kDa
Gene ID:	4250
UniProt:	<a href="#">Q13296</a>

## Application Details

Application Notes:	WB: 1:500-1:3000, IHC: 1:50-1:200, IF/ICC: 1:100-1:500, ELISA(peptide) 1:20000-1:40000
Restrictions:	For Research Use only

## Handling

Format:	Liquid
Concentration:	1 mg/mL
Buffer:	Rabbit IgG in phosphate buffered saline , pH 7.4, 150 mM NaCl, 0.02 % sodium azide and 50 % glycerol.
Preservative:	Sodium azide
Precaution of Use:	This product contains Sodium azide: a POISONOUS AND HAZARDOUS SUBSTANCE which should be handled by trained staff only.
Storage:	-20 °C
Storage Comment:	Store at -20 °C. Stable for 12 months from date of receipt.
Expiry Date:	12 months

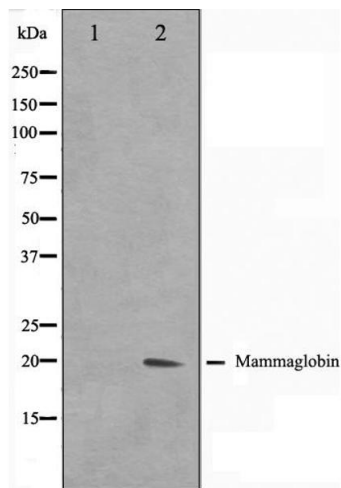


#### Western Blotting

**Image 1.** Western blot analysis of extracts from mouse lung, using Mammaglobin Antibody.

#### Immunohistochemistry

**Image 2.** ABIN6266582 at 1/100 staining human breast carcinoma tissue sections by IHC-P. The tissue was formaldehyde fixed and a heat mediated antigen retrieval step in citrate buffer was performed. The tissue was then blocked and incubated with the antibody for 1.5 hours at 22°C. An HRP conjugated goat anti-rabbit antibody was used as the secondary.



#### Western Blotting

**Image 3.** Western blot analysis on HepG2 cell lysate using Mammaglobin Antibody. The lane on the left is treated with the antigen-specific peptide.

Please check the [product details page](#) for more images. Overall 4 images are available for ABIN6263087.