



[Go to Product page](#)

Datasheet for ABIN6263093

## anti-MAP1A antibody (Internal Region)

### 1 Image

#### Overview

Quantity:	100 µL
Target:	MAP1A
Binding Specificity:	Internal Region
Reactivity:	Human, Mouse, Rat
Host:	Rabbit
Clonality:	Polyclonal
Conjugate:	This MAP1A antibody is un-conjugated
Application:	ELISA, Western Blotting (WB)

#### Product Details

Immunogen:	A synthesized peptide derived from human MAP1A, corresponding to a region within the internal amino acids.
Isotype:	IgG
Specificity:	MAP1A Antibody detects endogenous levels of total MAP1A.
Predicted Reactivity:	Pig,Horse,Sheep,Dog
Purification:	The antiserum was purified by peptide affinity chromatography using SulfoLink™ Coupling Resin (Thermo Fisher Scientific).

#### Target Details

Target:	MAP1A
---------	-------

## Target Details

---

Alternative Name:	MAP1A ( <a href="#">MAP1A Products</a> )
Background:	Description: Structural protein involved in the filamentous cross-bridging between microtubules and other skeletal elements. Gene: MAP1A
Molecular Weight:	305kDa
Gene ID:	4130
UniProt:	<a href="#">P78559</a>
Pathways:	<a href="#">Microtubule Dynamics</a> , <a href="#">Sensory Perception of Sound</a>

## Application Details

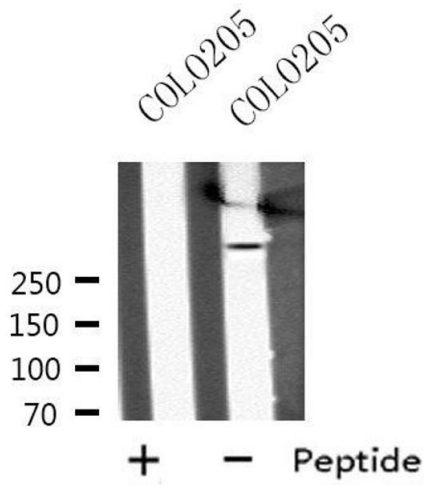
---

Application Notes:	WB 1:1000-3000, ELISA(peptide) 1:20000-1:40000
Restrictions:	For Research Use only

## Handling

---

Format:	Liquid
Concentration:	1 mg/mL
Buffer:	Rabbit IgG in phosphate buffered saline , pH 7.4, 150 mM NaCl, 0.02 % sodium azide and 50 % glycerol.
Preservative:	Sodium azide
Precaution of Use:	This product contains Sodium azide: a POISONOUS AND HAZARDOUS SUBSTANCE which should be handled by trained staff only.
Storage:	-20 °C
Storage Comment:	Store at -20 °C. Stable for 12 months from date of receipt.
Expiry Date:	12 months



### Western Blotting

**Image 1.** Western blot analysis of MAP1A using COLO205 whole cell lysates