



[Go to Product page](#)

Datasheet for ABIN6263112  
**anti-MLK4 antibody**

2 Images

Overview

Quantity:	100 µL
Target:	MLK4 (KIAA1804)
Reactivity:	Human
Host:	Rabbit
Clonality:	Polyclonal
Conjugate:	This MLK4 antibody is un-conjugated
Application:	Western Blotting (WB), ELISA, Immunofluorescence (IF), Immunocytochemistry (ICC)

Product Details

Immunogen:	A synthesized peptide derived from human MAP3KL4
Isotype:	IgG
Specificity:	MAP3KL4 Antibody detects endogenous levels of MAP3KL4
Cross-Reactivity:	Human
Purification:	The antiserum was purified by peptide affinity chromatography using SulfoLink™ Coupling Resin (Thermo Fisher Scientific).

Target Details

Target:	MLK4 (KIAA1804)
Alternative Name:	MLK4 ( <a href="#">KIAA1804 Products</a> )
Background:	Description: Negative regulator of TLR4 signaling. Does not activate JNK1/MAPK8 pathway,

## Target Details

---

p38/MAPK14, nor ERK2/MAPK1 pathways.

Gene: MAP3K21

---

Molecular Weight: 110kDa

---

Gene ID: 84451

---

UniProt: [Q5TCX8](#)

---

## Application Details

---

Application Notes: WB 1:500-1:2000, IF/ICC 1:100-1:500

---

Restrictions: For Research Use only

---

## Handling

---

Format: Liquid

---

Concentration: 1 mg/mL

---

Buffer: Rabbit IgG in phosphate buffered saline , pH 7.4, 150 mM NaCl, 0.02 % sodium azide and 50 % glycerol.

---

Preservative: Sodium azide

---

Precaution of Use: This product contains Sodium azide: a POISONOUS AND HAZARDOUS SUBSTANCE which should be handled by trained staff only.

---

Storage: -20 °C

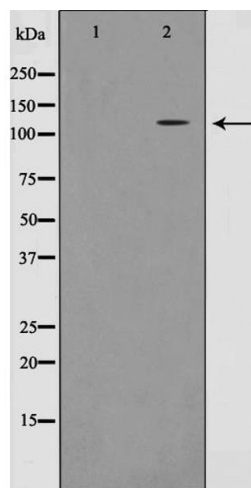
---

Storage Comment: Store at -20 °C.Stable for 12 months from date of receipt

---

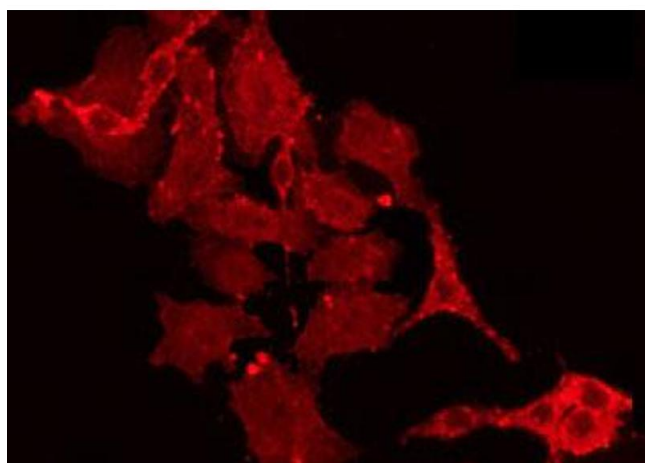
Expiry Date: 12 months

---



### Western Blotting

**Image 1.** Western blot analysis on HT29 cell lysate using MLK4 Antibody, The lane on the left is treated with the antigen-specific peptide.



### Immunofluorescence (fixed cells)

**Image 2.** ABIN6266890 staining HT29 by IF/ICC. The sample were fixed with PFA and permeabilized in 0.1% Triton X-100, then blocked in 10% serum for 45 minutes at 25°C. The primary antibody was diluted at 1/200 and incubated with the sample for 1 hour at 37°C. An Alexa Fluor 594 conjugated goat anti-rabbit IgG (H+L) Ab, diluted at 1/600, was used as the secondary antibody.