



[Go to Product page](#)

Datasheet for ABIN6263142

anti-MAT2B antibody (Internal Region)

3 Images

Overview

Quantity:	100 µL
Target:	MAT2B
Binding Specificity:	Internal Region
Reactivity:	Human, Mouse, Rat
Host:	Rabbit
Clonality:	Polyclonal
Conjugate:	This MAT2B antibody is un-conjugated
Application:	Western Blotting (WB), Immunohistochemistry (IHC), Immunofluorescence (IF), Immunocytochemistry (ICC)

Product Details

Immunogen:	A synthesized peptide derived from human MAT2B, corresponding to a region within the internal amino acids.
Isotype:	IgG
Specificity:	MAT2B Antibody detects endogenous levels of total MAT2B.
Predicted Reactivity:	Pig,Bovine,Horse,Sheep,Rabbit,Dog,Chicken,Xenopus
Purification:	The antiserum was purified by peptide affinity chromatography using SulfoLink™ Coupling Resin (Thermo Fisher Scientific).

Target Details

Target:	MAT2B
---------	-------

Target Details

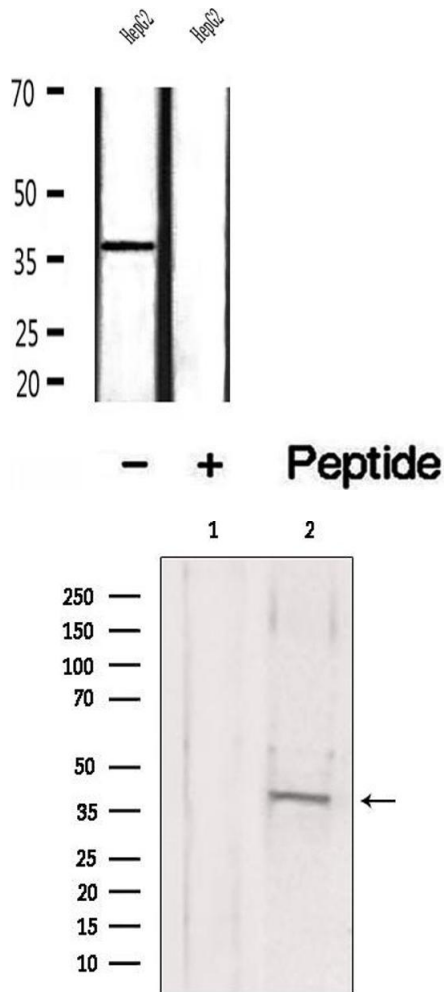
Alternative Name:	MAT2B (MAT2B Products)
Background:	Description: Regulatory subunit of S-adenosylmethionine synthetase 2, an enzyme that catalyzes the formation of S-adenosylmethionine from methionine and ATP. Regulates MAT2A catalytic activity by changing its kinetic properties, increasing its affinity for L-methionine (PubMed:10644686, PubMed:23189196, PubMed:25075345). Can bind NADP (in vitro) (PubMed:23189196, PubMed:23425511). Gene: MAT2B
Molecular Weight:	38 kDa
Gene ID:	27430
UniProt:	Q9NZL9
Pathways:	Ribonucleoside Biosynthetic Process , Methionine Biosynthetic Process , SARS-CoV-2 Protein Interactome

Application Details

Application Notes:	WB 1:500-1:2000, IHC 1:50-1:200, IF/ICC 1:100-1:500
Restrictions:	For Research Use only

Handling

Format:	Liquid
Concentration:	1 mg/mL
Buffer:	Rabbit IgG in phosphate buffered saline , pH 7.4, 150 mM NaCl, 0.02 % sodium azide and 50 % glycerol.
Preservative:	Sodium azide
Precaution of Use:	This product contains Sodium azide: a POISONOUS AND HAZARDOUS SUBSTANCE which should be handled by trained staff only.
Storage:	-20 °C
Storage Comment:	Store at -20 °C. Stable for 12 months from date of receipt.
Expiry Date:	12 months

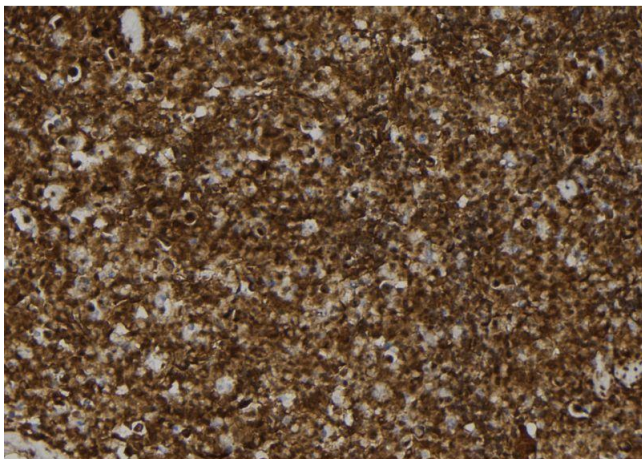


Western Blotting

Image 1. Western blot analysis of extracts of HepG2 cells, using MAT2B antibody.

Western Blotting

Image 2. Western blot analysis of extracts from mouse brain, using MAT2B antibody. Lane 1 was treated with the blocking peptide.



Immunohistochemistry

Image 3. ABIN6272924 at 1/100 staining Mouse spleen tissue by IHC-P. The sample was formaldehyde fixed and a heat mediated antigen retrieval step in citrate buffer was performed. The sample was then blocked and incubated with the antibody for 1.5 hours at 22°C. An HRP conjugated goat anti-rabbit antibody was used as the secondary.