

Datasheet for ABIN6263148  
**anti-MBD2 antibody (Internal Region)**[Go to Product page](#)

## 1 Image

## Overview

Quantity:	100 µL
Target:	MBD2
Binding Specificity:	Internal Region
Reactivity:	Human, Mouse
Host:	Rabbit
Clonality:	Polyclonal
Conjugate:	This MBD2 antibody is un-conjugated
Application:	Western Blotting (WB), ELISA, Immunofluorescence (IF), Immunocytochemistry (ICC)

## Product Details

Immunogen:	A synthesized peptide derived from human MBD2, corresponding to a region within the internal amino acids.
Isotype:	IgG
Specificity:	MBD2 Antibody detects endogenous levels of total MBD2.
Predicted Reactivity:	Pig,Bovine,Horse,Sheep,Rabbit,Xenopus
Purification:	The antiserum was purified by peptide affinity chromatography using SulfoLink™ Coupling Resin (Thermo Fisher Scientific).

## Target Details

Target:	MBD2
---------	------

## Target Details

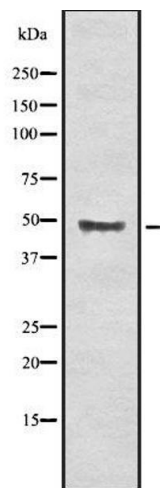
Alternative Name:	MBD2 ( <a href="#">MBD2 Products</a> )
Background:	<p>Description: Binds CpG islands in promoters where the DNA is methylated at position 5 of cytosine within CpG dinucleotides. Binds hemimethylated DNA as well. Recruits histone deacetylases and DNA methyltransferases. Acts as transcriptional repressor and plays a role in gene silencing. Functions as a scaffold protein, targeting GATAD2A and GATAD2B to chromatin to promote repression. May enhance the activation of some unmethylated cAMP-responsive promoters.</p> <p>Gene: MBD2</p>
Molecular Weight:	43 kDa
Gene ID:	8932
UniProt:	<a href="#">Q9UBB5</a>
Pathways:	<a href="#">Chromatin Binding</a>

## Application Details

Application Notes:	WB 1:1000-3000, IF/ICC 1:100-1:500, ELISA(peptide) 1:20000-1:40000
Restrictions:	For Research Use only

## Handling

Format:	Liquid
Concentration:	1 mg/mL
Buffer:	Rabbit IgG in phosphate buffered saline , pH 7.4, 150 mM NaCl, 0.02 % sodium azide and 50 % glycerol.
Preservative:	Sodium azide
Precaution of Use:	This product contains Sodium azide: a POISONOUS AND HAZARDOUS SUBSTANCE which should be handled by trained staff only.
Storage:	-20 °C
Storage Comment:	Store at -20 °C. Stable for 12 months from date of receipt.
Expiry Date:	12 months



Western Blotting

**Image 1.** Western blot analysis of MBD2 using K562 whole cell lysates