

Datasheet for ABIN6263157  
**anti-MCM10 antibody (C-Term)**[Go to Product page](#)

## 3 Images

## Overview

Quantity:	100 µL
Target:	MCM10
Binding Specificity:	C-Term
Reactivity:	Human, Mouse, Rat
Host:	Rabbit
Clonality:	Polyclonal
Conjugate:	This MCM10 antibody is un-conjugated
Application:	Western Blotting (WB), Immunohistochemistry (IHC)

## Product Details

Immunogen:	A synthesized peptide derived from human MCM10, corresponding to a region within C-terminal amino acids.
Isotype:	IgG
Specificity:	MCM10 Antibody detects endogenous levels of total MCM10.
Predicted Reactivity:	Pig,Zebrafish,Horse,Sheep,Rabbit,Dog,Xenopus
Purification:	The antiserum was purified by peptide affinity chromatography using SulfoLink™ Coupling Resin (Thermo Fisher Scientific).

## Target Details

Target:	MCM10
---------	-------

## Target Details

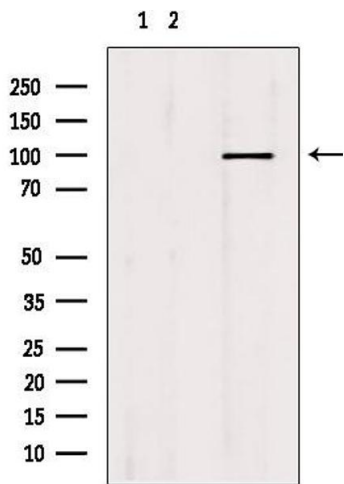
Alternative Name:	MCM10 ( <a href="#">MCM10 Products</a> )
Background:	<p>Description: Acts as a replication initiation factor that brings together the MCM2-7 helicase and the DNA polymerase alpha/primase complex in order to initiate DNA replication. Additionally, plays a role in preventing DNA damage during replication. Key effector of the RBBP6 and ZBTB38-mediated regulation of DNA-replication and common fragile sites stability, acts as a direct target of transcriptional repression by ZBTB38 (PubMed:24726359).</p> <p>Gene: MCM10</p>
Molecular Weight:	97-105 kDa
Gene ID:	55388
UniProt:	<a href="#">Q7L590</a>
Pathways:	<a href="#">Mitotic G1-G1/S Phases, DNA Replication</a>

## Application Details

Application Notes:	WB 1:500-1:2000, IHC 1:50-1:200
Restrictions:	For Research Use only

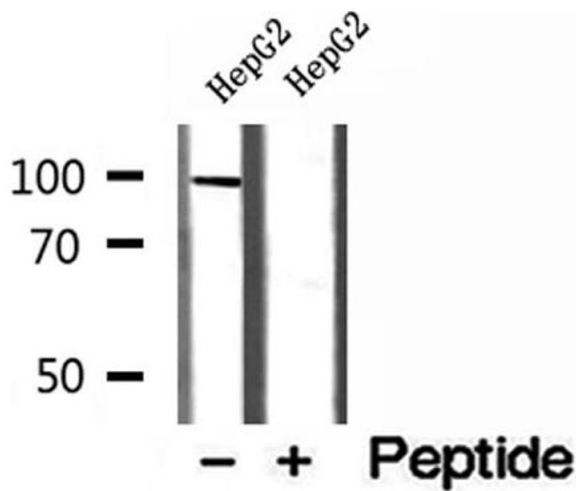
## Handling

Format:	Liquid
Concentration:	1 mg/mL
Buffer:	Rabbit IgG in phosphate buffered saline , pH 7.4, 150 mM NaCl, 0.02 % sodium azide and 50 % glycerol.
Preservative:	Sodium azide
Precaution of Use:	This product contains Sodium azide: a POISONOUS AND HAZARDOUS SUBSTANCE which should be handled by trained staff only.
Storage:	-20 °C
Storage Comment:	Store at -20 °C. Stable for 12 months from date of receipt.
Expiry Date:	12 months



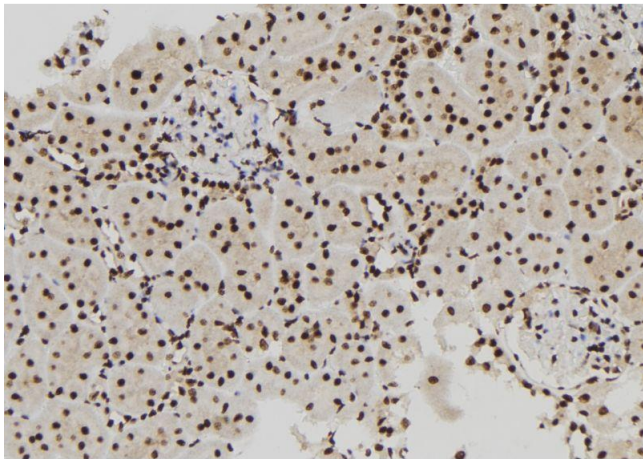
#### Western Blotting

**Image 1.** Western blot analysis of extracts from mouse brain, using MCM10 antibody. Lane 1 was treated with the blocking peptide.



#### Western Blotting

**Image 2.** Western blot analysis of extracts of HepG2 cells, using MCM10 antibody.



#### Immunohistochemistry

**Image 3.** ABIN6273006 at 1/100 staining Rat kidney tissue by IHC-P. The sample was formaldehyde fixed and a heat mediated antigen retrieval step in citrate buffer was performed. The sample was then blocked and incubated with the antibody for 1.5 hours at 22°C. An HRP conjugated goat anti-rabbit antibody was used as the secondary.