

Datasheet for ABIN6263158
anti-MCM2 antibody (N-Term)[Go to Product page](#)

4 Images

Overview

Quantity:	100 µL
Target:	MCM2
Binding Specificity:	N-Term
Reactivity:	Human, Mouse, Rat
Host:	Rabbit
Clonality:	Polyclonal
Conjugate:	This MCM2 antibody is un-conjugated
Application:	Western Blotting (WB), Immunohistochemistry (IHC), ELISA, Immunofluorescence (IF), Immunocytochemistry (ICC)

Product Details

Immunogen:	A synthesized peptide derived from human MCM2, corresponding to a region within N-terminal amino acids.
Isotype:	IgG
Specificity:	MCM2 Antibody detects endogenous levels of total MCM2.
Predicted Reactivity:	Pig,Horse,Rabbit,Dog
Purification:	The antiserum was purified by peptide affinity chromatography using SulfoLink™ Coupling Resin (Thermo Fisher Scientific).

Target Details

Target:	MCM2
---------	------

Target Details

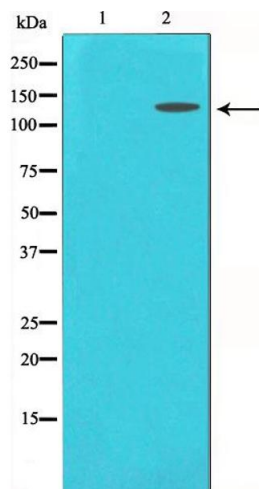
Alternative Name:	MCM2 (MCM2 Products)
Background:	<p>Description: Acts as component of the MCM2-7 complex (MCM complex) which is the putative replicative helicase essential for 'once per cell cycle' DNA replication initiation and elongation in eukaryotic cells. The active ATPase sites in the MCM2-7 ring are formed through the interaction surfaces of two neighboring subunits such that a critical structure of a conserved arginine finger motif is provided in trans relative to the ATP-binding site of the Walker A box of the adjacent subunit. The six ATPase active sites, however, are likely to contribute differentially to the complex helicase activity. Required for the entry in S phase and for cell division. Plays a role in terminally differentiated hair cells development of the cochlea and induces cells apoptosis.</p> <p>Gene: MCM2</p>
Molecular Weight:	120kDa
Gene ID:	4171
UniProt:	P49736
Pathways:	DNA Damage Repair , Mitotic G1-G1/S Phases , DNA Replication , Chromatin Binding , Synthesis of DNA

Application Details

Application Notes:	WB: 1:500-1:3000, IHC: 1:50-1:200, IF/ICC: 1:100-1:500, ELISA(peptide) 1:20000-1:40000
Restrictions:	For Research Use only

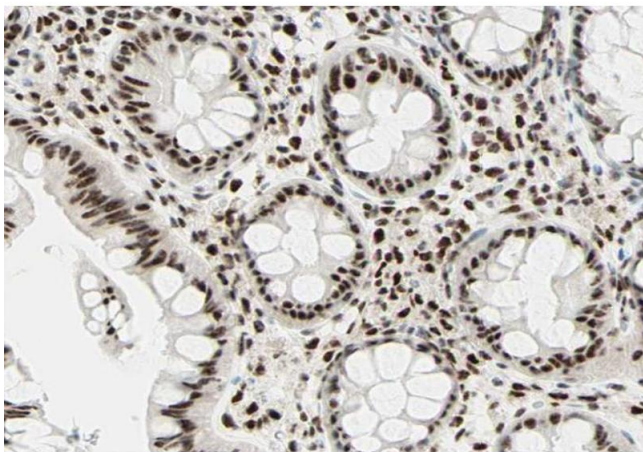
Handling

Format:	Liquid
Concentration:	1 mg/mL
Buffer:	Rabbit IgG in phosphate buffered saline , pH 7.4, 150 mM NaCl, 0.02 % sodium azide and 50 % glycerol.
Preservative:	Sodium azide
Precaution of Use:	This product contains Sodium azide: a POISONOUS AND HAZARDOUS SUBSTANCE which should be handled by trained staff only.
Storage:	-20 °C
Storage Comment:	Store at -20 °C. Stable for 12 months from date of receipt.



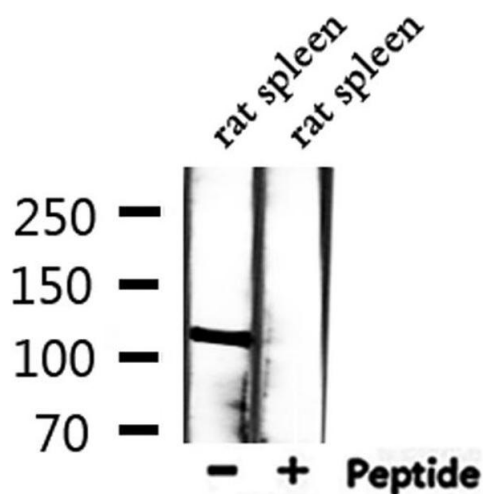
Western Blotting

Image 1. Western blot analysis on 293 cell lysate using MCM2 Antibody. The lane on the left is treated with the antigen-specific peptide.



Immunohistochemistry

Image 2. ABIN6266586 at 1/100 staining human colon carcinoma tissue sections by IHC-P. The tissue was formaldehyde fixed and a heat mediated antigen retrieval step in citrate buffer was performed. The tissue was then blocked and incubated with the antibody for 1.5 hours at 22 °C. An HRP conjugated goat anti-rabbit antibody was used as the secondary.



Western Blotting

Image 3. Western blot analysis of extracts from rat spleen, using MCM2 Antibody.

Please check the [product details page](#) for more images. Overall 4 images are available for ABIN6263158.