

Datasheet for ABIN6263163  
**anti-MCM5 antibody (N-Term)**

## 6 Images

[Go to Product page](#)

## Overview

Quantity:	100 µL
Target:	MCM5
Binding Specificity:	N-Term
Reactivity:	Human, Mouse, Rat
Host:	Rabbit
Clonality:	Polyclonal
Conjugate:	This MCM5 antibody is un-conjugated
Application:	Western Blotting (WB), Immunohistochemistry (IHC), Immunofluorescence (IF), ELISA, Immunocytochemistry (ICC)

## Product Details

Immunogen:	A synthesized peptide derived from human MCM5, corresponding to a region within N-terminal amino acids.
Isotype:	IgG
Specificity:	MCM5 Antibody detects endogenous levels of total MCM5.
Predicted Reactivity:	Pig,Zebrafish,Bovine,Horse,Sheep,Rabbit,Chicken,Xenopus
Purification:	The antiserum was purified by peptide affinity chromatography using SulfoLink™ Coupling Resin (Thermo Fisher Scientific).

## Target Details

Target:	MCM5
---------	------

## Target Details

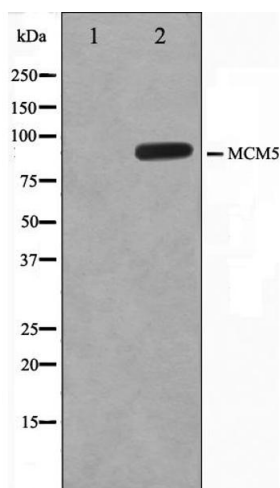
Alternative Name:	MCM5 ( <a href="#">MCM5 Products</a> )
Background:	<p>Description: Acts as component of the MCM2-7 complex (MCM complex) which is the putative replicative helicase essential for 'once per cell cycle' DNA replication initiation and elongation in eukaryotic cells. The active ATPase sites in the MCM2-7 ring are formed through the interaction surfaces of two neighboring subunits such that a critical structure of a conserved arginine finger motif is provided in trans relative to the ATP-binding site of the Walker A box of the adjacent subunit. The six ATPase active sites, however, are likely to contribute differentially to the complex helicase activity (By similarity). Interacts with MCMBP.</p> <p>Gene: MCM5</p>
Molecular Weight:	90kDa
Gene ID:	4174
UniProt:	<a href="#">P33992</a>
Pathways:	<a href="#">DNA Damage Repair</a> , <a href="#">Mitotic G1-G1/S Phases</a> , <a href="#">DNA Replication</a> , <a href="#">Chromatin Binding</a> , <a href="#">Synthesis of DNA</a>

## Application Details

Application Notes:	WB: 1:500-1:3000, IHC: 1:50-1:200, IF/ICC: 1:100-1:500, ELISA(peptide) 1:20000-1:40000
Restrictions:	For Research Use only

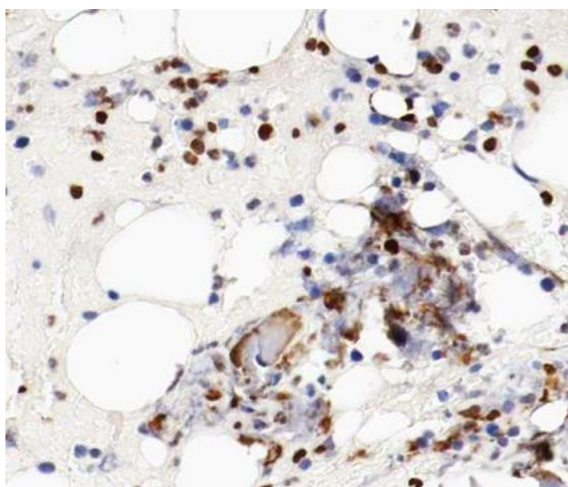
## Handling

Format:	Liquid
Concentration:	1 mg/mL
Buffer:	Rabbit IgG in phosphate buffered saline , pH 7.4, 150 mM NaCl,sodium azide and glycerol.
Preservative:	Sodium azide
Precaution of Use:	This product contains Sodium azide: a POISONOUS AND HAZARDOUS SUBSTANCE which should be handled by trained staff only.
Storage:	-20 °C
Storage Comment:	Store at -20 °C. Stable for 12 months from date of receipt.
Expiry Date:	12 months



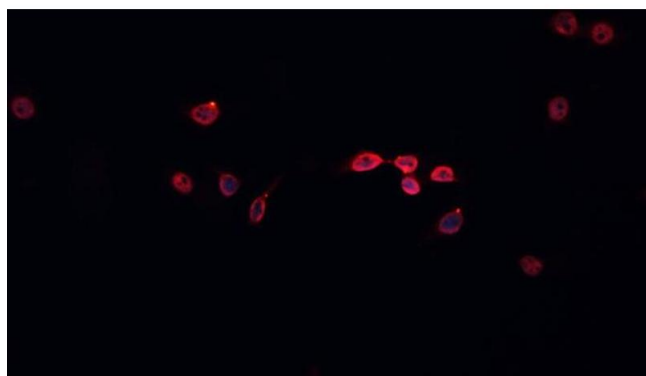
### Western Blotting

**Image 1.** Western blot analysis on HepG2 cell lysate using MCM5 Antibody. The lane on the left is treated with the antigen-specific peptide.



### Immunohistochemistry

**Image 2.** ABIN6266587 at 1/100 staining human bone tissue sections by IHC-P. The tissue was formaldehyde fixed and a heat mediated antigen retrieval step in citrate buffer was performed. The tissue was then blocked and incubated with the antibody for 1.5 hours at 22 °C. An HRP conjugated goat anti-rabbit antibody was used as the secondary.



### Immunofluorescence (fixed cells)

**Image 3.** ABIN6266587 staining HeLa cells by IF/ICC. The sample were fixed with PFA and permeabilized in 0.1% Triton X-100, then blocked in 10% serum for 45 minutes at 25°C. The primary antibody was diluted at 1/200 and incubated with the sample for 1 hour at 37°C. An Alexa Fluor 594 conjugated goat anti-rabbit IgG (H+L) antibody (Cat.# S0006), diluted at 1/600, was used as secondary antibody.

Please check the [product details page](#) for more images. Overall 6 images are available for ABIN6263163.