

Datasheet for ABIN6263168  
**anti-MCM8 antibody (C-Term)**[Go to Product page](#)

## 1 Image

## Overview

Quantity:	100 µL
Target:	MCM8
Binding Specificity:	C-Term
Reactivity:	Human, Rat
Host:	Rabbit
Clonality:	Polyclonal
Conjugate:	This MCM8 antibody is un-conjugated
Application:	Western Blotting (WB), ELISA, Immunocytochemistry (ICC), Immunofluorescence (IF)

## Product Details

Immunogen:	A synthesized peptide derived from human MCM8, corresponding to a region within C-terminal amino acids.
Isotype:	IgG
Specificity:	MCM8 Antibody detects endogenous levels of total MCM8.
Predicted Reactivity:	Zebrafish,Bovine,Horse,Sheep,Rabbit,Dog,Chicken,Xenopus
Purification:	The antiserum was purified by peptide affinity chromatography using SulfoLink™ Coupling Resin (Thermo Fisher Scientific).

## Target Details

Target:	MCM8
---------	------

## Target Details

Alternative Name:	MCM8 ( <a href="#">MCM8 Products</a> )
Background:	<p>Description: Component of the MCM8-MCM9 complex, a complex involved in homologous recombination repair following DNA interstrand cross-links and plays a key role during gametogenesis. The MCM8-MCM9 complex probably acts as a hexameric helicase downstream of the Fanconi anemia proteins BRCA2 and RAD51 and is required to process aberrant forks into homologous recombination substrates and to orchestrate homologous recombination with resection, fork stabilization and fork restart. May also play a non-essential for DNA replication: may be involved in the activation of the prereplicative complex (pre-RC) during G1 phase by recruiting CDC6 to the origin recognition complex (ORC). Binds chromatin throughout the cell cycle.</p> <p>Gene: MCM8</p>
Molecular Weight:	94 kDa
Gene ID:	84515
UniProt:	<a href="#">Q9UJA3</a>
Pathways:	<a href="#">Mitotic G1-G1/S Phases</a> , <a href="#">DNA Replication</a> , <a href="#">Synthesis of DNA</a>

## Application Details

Application Notes:	WB 1:1000-3000, IF/ICC 1:100-1:500, ELISA(peptide) 1:20000-1:40000
Restrictions:	For Research Use only

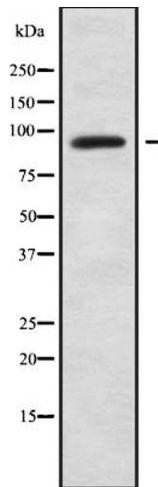
## Handling

Format:	Liquid
Concentration:	1 mg/mL
Buffer:	Rabbit IgG in phosphate buffered saline , pH 7.4, 150 mM NaCl, 0.02 % sodium azide and 50 % glycerol.
Preservative:	Sodium azide
Precaution of Use:	This product contains Sodium azide: a POISONOUS AND HAZARDOUS SUBSTANCE which should be handled by trained staff only.
Storage:	-20 °C
Storage Comment:	Store at -20 °C. Stable for 12 months from date of receipt.

## Handling

Expiry Date: 12 months

## Images



### Western Blotting

**Image 1.** Western blot analysis of MCM8 using COLO205 whole cell lysates