



[Go to Product page](#)

Datasheet for ABIN6263176
anti-MDM1 antibody (Internal Region)

2 Images

Overview

Quantity:	100 µL
Target:	MDM1
Binding Specificity:	Internal Region
Reactivity:	Human, Mouse, Rat
Host:	Rabbit
Clonality:	Polyclonal
Conjugate:	This MDM1 antibody is un-conjugated
Application:	Western Blotting (WB), ELISA, Immunocytochemistry (ICC), Immunofluorescence (IF)

Product Details

Immunogen:	A synthesized peptide derived from human MDM1, corresponding to a region within the internal amino acids.
Isotype:	IgG
Specificity:	MDM1 Antibody detects endogenous levels of total MDM1.
Predicted Reactivity:	Pig
Purification:	The antiserum was purified by peptide affinity chromatography using SulfoLink™ Coupling Resin (Thermo Fisher Scientific).

Target Details

Target:	MDM1
---------	------

Target Details

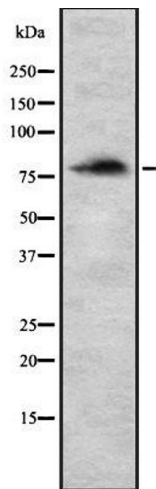
Alternative Name:	MDM1 (MDM1 Products)
Background:	Description: Microtubule-binding protein that negatively regulates centriole duplication. Binds to and stabilizes microtubules (PubMed:26337392). Gene: MDM1
Molecular Weight:	80 kDa
Gene ID:	56890
UniProt:	Q8TC05

Application Details

Application Notes:	WB 1:1000-3000, IF/ICC 1:100-1:500, ELISA(peptide) 1:20000-1:40000
Restrictions:	For Research Use only

Handling

Format:	Liquid
Concentration:	1 mg/mL
Buffer:	Rabbit IgG in phosphate buffered saline , pH 7.4, 150 mM NaCl, 0.02 % sodium azide and 50 % glycerol.
Preservative:	Sodium azide
Precaution of Use:	This product contains Sodium azide: a POISONOUS AND HAZARDOUS SUBSTANCE which should be handled by trained staff only.
Storage:	-20 °C
Storage Comment:	Store at -20 °C. Stable for 12 months from date of receipt.
Expiry Date:	12 months



Western Blotting

Image 1. Western blot analysis of MDM1 using HeLa whole cell lysates



Immunofluorescence (fixed cells)

Image 2. ABIN6278590 staining NIH-3T3 cells by IF/ICC. The sample were fixed with PFA and permeabilized in 0.1% Triton X-100, then blocked in 10% serum for 45 minutes at 25°C. The primary antibody was diluted at 1/200 and incubated with the sample for 1 hour at 37°C. An Alexa Fluor 594 conjugated goat anti-rabbit IgG (H+L) antibody (Cat.# S0006), diluted at 1/600, was used as secondary antibody