

Datasheet for ABIN6263196  
**anti-MED30 antibody (Internal Region)**[Go to Product page](#)

## 1 Image

## Overview

Quantity:	100 µL
Target:	MED30
Binding Specificity:	Internal Region
Reactivity:	Human, Mouse, Rat
Host:	Rabbit
Clonality:	Polyclonal
Conjugate:	This MED30 antibody is un-conjugated
Application:	Western Blotting (WB), ELISA

## Product Details

Immunogen:	A synthesized peptide derived from human MED30, corresponding to a region within the internal amino acids.
Isotype:	IgG
Specificity:	MED30 Antibody detects endogenous levels of total MED30.
Predicted Reactivity:	Pig,Bovine,Horse,Sheep,Rabbit,Dog,Chicken
Purification:	The antiserum was purified by peptide affinity chromatography using SulfoLink™ Coupling Resin (Thermo Fisher Scientific).

## Target Details

Target:	MED30
---------	-------

## Target Details

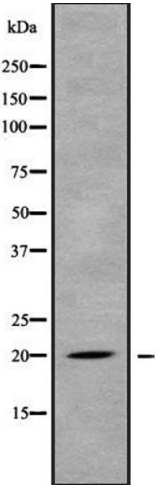
Alternative Name:	MED30 ( <a href="#">MED30 Products</a> )
Background:	<p>Description: Component of the Mediator complex, a coactivator involved in the regulated transcription of nearly all RNA polymerase II-dependent genes. Mediator functions as a bridge to convey information from gene-specific regulatory proteins to the basal RNA polymerase II transcription machinery. Mediator is recruited to promoters by direct interactions with regulatory proteins and serves as a scaffold for the assembly of a functional preinitiation complex with RNA polymerase II and the general transcription factors.</p> <p>Gene: MED30</p>
Molecular Weight:	20 kDa
Gene ID:	90390
UniProt:	<a href="#">Q96HR3</a>
Pathways:	<a href="#">Intracellular Steroid Hormone Receptor Signaling Pathway</a> , <a href="#">Nuclear Hormone Receptor Binding</a> , <a href="#">Stem Cell Maintenance</a> , <a href="#">Regulation of Lipid Metabolism by PPARalpha</a>

## Application Details

Application Notes:	WB 1:1000-3000, ELISA(peptide) 1:20000-1:40000
Restrictions:	For Research Use only

## Handling

Format:	Liquid
Concentration:	1 mg/mL
Buffer:	Rabbit IgG in phosphate buffered saline , pH 7.4, 150 mM NaCl, 0.02 % sodium azide and 50 % glycerol.
Preservative:	Sodium azide
Precaution of Use:	This product contains Sodium azide: a POISONOUS AND HAZARDOUS SUBSTANCE which should be handled by trained staff only.
Storage:	-20 °C
Storage Comment:	Store at -20 °C. Stable for 12 months from date of receipt.
Expiry Date:	12 months



Western Blotting

**Image 1.** Western blot analysis of MED30 using MCF7 whole cell lysates