

Datasheet for ABIN6263204
anti-MEF2C antibody (C-Term)

2 Images

[Go to Product page](#)

Overview

Quantity:	100 µL
Target:	MEF2C
Binding Specificity:	C-Term
Reactivity:	Human, Mouse
Host:	Rabbit
Clonality:	Polyclonal
Conjugate:	This MEF2C antibody is un-conjugated
Application:	Western Blotting (WB), ELISA, Immunofluorescence (IF), Immunohistochemistry (Paraffin-embedded Sections) (IHC (p)), Chromatin Immunoprecipitation (ChIP), Immunocytochemistry (ICC), Immunohistochemistry (Frozen Sections) (IHC (fro))

Product Details

Immunogen:	A synthesized peptide derived from human MEF2C, corresponding to a region within C-terminal amino acids.
Isotype:	IgG
Specificity:	MEF2C Antibody detects endogenous levels of total MEF2C.
Predicted Reactivity:	Pig,Horse,Sheep,Dog,Xenopus
Purification:	The antiserum was purified by peptide affinity chromatography using SulfoLink™ Coupling Resin (Thermo Fisher Scientific).

Target Details

Target:	MEF2C
Alternative Name:	MEF2C (MEF2C Products)
Background:	<p>Description: Transcription activator which binds specifically to the MEF2 element present in the regulatory regions of many muscle-specific genes. Controls cardiac morphogenesis and myogenesis, and is also involved in vascular development. Plays an essential role in hippocampal-dependent learning and memory by suppressing the number of excitatory synapses and thus regulating basal and evoked synaptic transmission. Crucial for normal neuronal development, distribution, and electrical activity in the neocortex. Necessary for proper development of megakaryocytes and platelets and for bone marrow B-lymphopoiesis. Required for B-cell survival and proliferation in response to BCR stimulation, efficient IgG1 antibody responses to T-cell-dependent antigens and for normal induction of germinal center B-cells. May also be involved in neurogenesis and in the development of cortical architecture (By similarity). Isoform 3 and isoform 4, which lack the repressor domain, are more active than isoform 1 and isoform 2.</p> <p>Gene: MEF2C</p>
Molecular Weight:	51 kDa
Gene ID:	4208
UniProt:	Q06413
Pathways:	Neurotrophin Signaling Pathway , Activation of Innate immune Response , Cellular Response to Molecule of Bacterial Origin , Carbohydrate Homeostasis , Chromatin Binding , Regulation of Muscle Cell Differentiation , Skeletal Muscle Fiber Development , Toll-Like Receptors Cascades , BCR Signaling

Application Details

Application Notes:	IHC 1:50-1:200-P, ChIP, IF/ICC 1:100-1:500, WB 1:500-1:2000, IHC-f 1:50-1:200, ELISA(peptide) 1:20000-1:40000
Restrictions:	For Research Use only

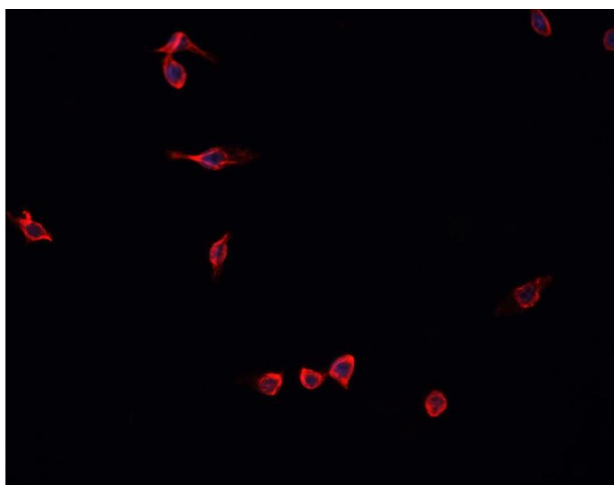
Handling

Format:	Liquid
Concentration:	1 mg/mL
Buffer:	Rabbit IgG in phosphate buffered saline , pH 7.4, 150 mM NaCl, 0.02 % sodium azide and 50 %

Handling

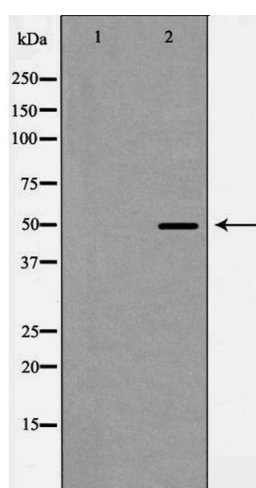
	glycerol.
Preservative:	Sodium azide
Precaution of Use:	This product contains Sodium azide: a POISONOUS AND HAZARDOUS SUBSTANCE which should be handled by trained staff only.
Storage:	-20 °C
Storage Comment:	Store at -20 °C. Stable for 12 months from date of receipt.
Expiry Date:	12 months

Images



Immunofluorescence (fixed cells)

Image 1. ABIN6268937 staining U-2 OS cells by IF/ICC. The sample were fixed with PFA and permeabilized in 0.1% Triton X-100, then blocked in 10% serum for 45 minutes at 25°C. The primary antibody was diluted at 1/200 and incubated with the sample for 1 hour at 37°C. An Alexa Fluor 594 conjugated goat anti-rabbit IgG (H+L) antibody (Cat.# S0006), diluted at 1/600, was used as secondary antibody.



Western Blotting

Image 2. Western blot analysis of MEF2C expression in 3T3 cell extracts. The lane on the left is treated with the antigen-specific peptide.