



[Go to Product page](#)

## Datasheet for ABIN6263216 anti-MEK2 antibody (C-Term)

### 3 Images

#### Overview

Quantity:	100 µL
Target:	MEK2 (MAP2K2)
Binding Specificity:	C-Term
Reactivity:	Human, Mouse, Rat
Host:	Rabbit
Clonality:	Polyclonal
Conjugate:	This MEK2 antibody is un-conjugated
Application:	Western Blotting (WB), Immunohistochemistry (IHC), ELISA, Immunoprecipitation (IP), Immunofluorescence (IF), Immunocytochemistry (ICC)

#### Product Details

Immunogen:	A synthesized peptide derived from human MEK2, corresponding to a region within C-terminal amino acids.
Isotype:	IgG
Specificity:	MEK2 Antibody detects endogenous levels of total MEK2.
Predicted Reactivity:	Bovine, Sheep, Dog, Chicken
Purification:	The antiserum was purified by peptide affinity chromatography using SulfoLink™ Coupling Resin (Thermo Fisher Scientific).

#### Target Details

Target:	MEK2 (MAP2K2)
---------	---------------

## Target Details

---

Alternative Name:	MAP2K2 ( <a href="#">MAP2K2 Products</a> )
Background:	Description: Catalyzes the concomitant phosphorylation of a threonine and a tyrosine residue in a Thr-Glu-Tyr sequence located in MAP kinases. Activates the ERK1 and ERK2 MAP kinases (By similarity). Gene: MAP2K2
Molecular Weight:	44kDa
Gene ID:	5605
UniProt:	<a href="#">P36507</a>
Pathways:	<a href="#">MAPK Signaling</a> , <a href="#">RTK Signaling</a> , <a href="#">Fc-epsilon Receptor Signaling Pathway</a> , <a href="#">Neurotrophin Signaling Pathway</a> , <a href="#">Activation of Innate immune Response</a> , <a href="#">Toll-Like Receptors Cascades</a> , <a href="#">Signaling of Hepatocyte Growth Factor Receptor</a> , <a href="#">BCR Signaling</a>

## Application Details

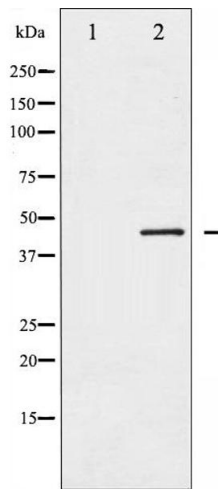
---

Application Notes:	WB 1:500-1:2000, IHC 1:50-1:200, IP, IF/ICC 1:100-1:500, ELISA(peptide) 1:20000-1:40000
Restrictions:	For Research Use only

## Handling

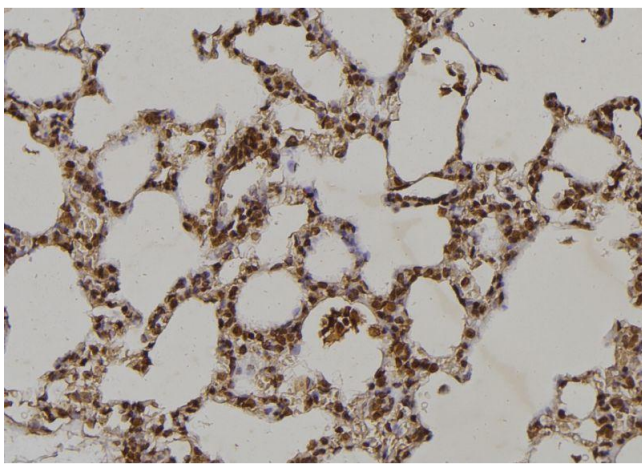
---

Format:	Liquid
Concentration:	1 mg/mL
Buffer:	Rabbit IgG in phosphate buffered saline , pH 7.4, 150 mM NaCl, 0.02 % sodium azide and 50 % glycerol.
Preservative:	Sodium azide
Precaution of Use:	This product contains Sodium azide: a POISONOUS AND HAZARDOUS SUBSTANCE which should be handled by trained staff only.
Storage:	-20 °C
Storage Comment:	Store at -20 °C. Stable for 12 months from date of receipt.
Expiry Date:	12 months



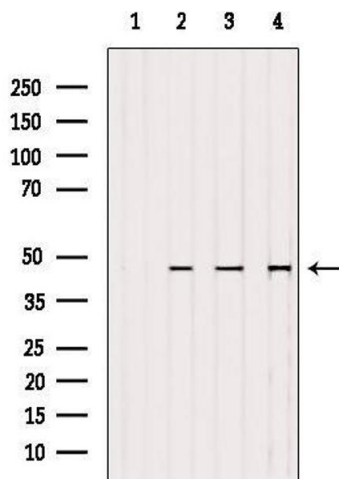
### Western Blotting

**Image 1.** Western blot analysis of MEK2 expression in ovarycancer whole cell lysates, The lane on the left is treated with the antigen-specific peptide.



### Immunohistochemistry

**Image 2.** ABIN6269229 at 1/100 staining Rat lung tissue by IHC-P. The sample was formaldehyde fixed and a heat mediated antigen retrieval step in citrate buffer was performed. The sample was then blocked and incubated with the antibody for 1.5 hours at 22°C. An HRP conjugated goat anti-rabbit antibody was used as the secondary.



### Western Blotting

**Image 3.** Western blot analysis of extracts from various samples, using MEK2 Antibody. Lane 1: HepG2 treated with blocking peptide; Lane 2: HepG2; Lane 3: B16f10; Lane 4: Mouse brain.