



[Go to Product page](#)

Datasheet for ABIN6263218

## anti-Melanophilin antibody (C-Term)

### 3 Images

#### Overview

Quantity:	100 µL
Target:	Melanophilin (MLPH)
Binding Specificity:	C-Term
Reactivity:	Human, Mouse, Rat
Host:	Rabbit
Clonality:	Polyclonal
Conjugate:	This Melanophilin antibody is un-conjugated
Application:	Western Blotting (WB), Immunohistochemistry (IHC)

#### Product Details

Immunogen:	A synthesized peptide derived from human Melanophilin, corresponding to a region within C-terminal amino acids.
Isotype:	IgG
Specificity:	Melanophilin Antibody detects endogenous levels of total Melanophilin.
Predicted Reactivity:	Bovine, Sheep, Chicken
Purification:	The antiserum was purified by peptide affinity chromatography using SulfoLink™ Coupling Resin (Thermo Fisher Scientific).

#### Target Details

Target:	Melanophilin (MLPH)
---------	---------------------

## Target Details

---

Alternative Name:	MLPH ( <a href="#">MLPH Products</a> )
Background:	Description: Rab effector protein involved in melanosome transport. Serves as link between melanosome-bound RAB27A and the motor protein MYO5A. Gene: MLPH
Molecular Weight:	66 kDa, 80 kDa
Gene ID:	79083
UniProt:	<a href="#">Q9BV36</a>

## Application Details

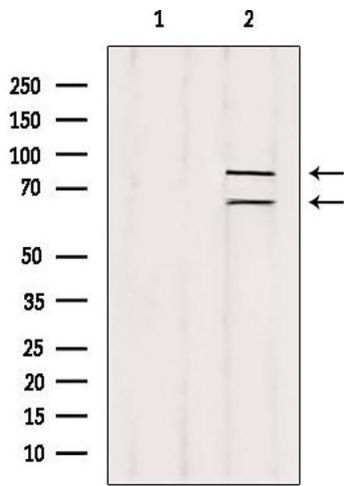
---

Application Notes:	WB 1:500-1:2000, IHC 1:50-1:200
Restrictions:	For Research Use only

## Handling

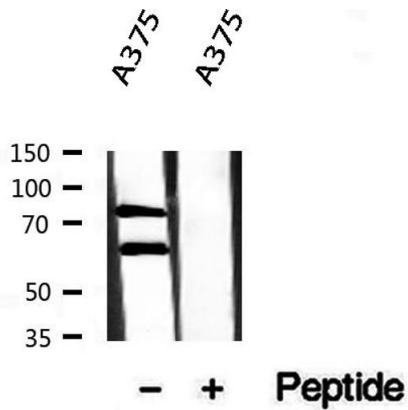
---

Format:	Liquid
Concentration:	1 mg/mL
Buffer:	Rabbit IgG in phosphate buffered saline , pH 7.4, 150 mM NaCl, 0.02 % sodium azide and 50 % glycerol.
Preservative:	Sodium azide
Precaution of Use:	This product contains Sodium azide: a POISONOUS AND HAZARDOUS SUBSTANCE which should be handled by trained staff only.
Storage:	-20 °C
Storage Comment:	Store at -20 °C. Stable for 12 months from date of receipt.
Expiry Date:	12 months



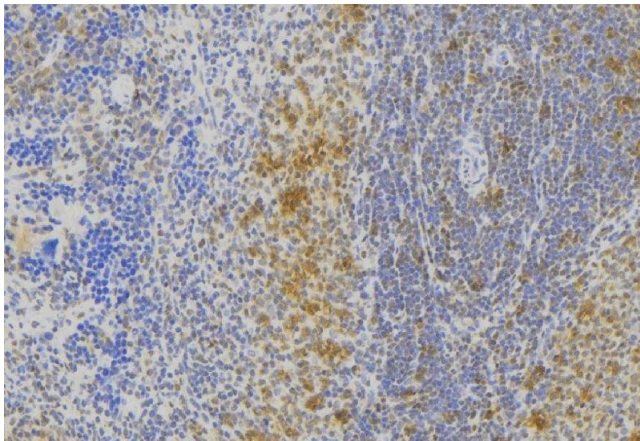
### Western Blotting

**Image 1.** Western blot analysis of extracts from rat spleen, using Melanophilin antibody. Lane 1 was treated with the blocking peptide.



### Western Blotting

**Image 2.** Western blot analysis of extracts from A375, using Melanophilin antibody.



### Immunohistochemistry

**Image 3.** ABIN6273007 at 1/100 staining Human lymph node tissue by IHC-P. The sample was formaldehyde fixed and a heat mediated antigen retrieval step in citrate buffer was performed. The sample was then blocked and incubated with the antibody for 1.5 hours at 22°C. An HRP conjugated goat anti-rabbit antibody was used as the secondary