

Datasheet for ABIN6263246
anti-MHC, Class I antibody[Go to Product page](#)

3 Images

Overview

Quantity:	100 µL
Target:	MHC, Class I
Reactivity:	Human, Rat
Host:	Rabbit
Clonality:	Polyclonal
Conjugate:	This MHC, Class I antibody is un-conjugated
Application:	Immunohistochemistry (IHC), Western Blotting (WB), Immunofluorescence (IF), ELISA, Immunocytochemistry (ICC)

Product Details

Immunogen:	A synthesized peptide derived from human MHC class 1
Isotype:	IgG
Specificity:	MHC class 1 Antibody detects endogenous levels of total MHC class 1
Cross-Reactivity:	Human, Rat (Rattus)
Purification:	The antiserum was purified by peptide affinity chromatography using SulfoLink™ Coupling Resin (Thermo Fisher Scientific).

Target Details

Target:	MHC, Class I
Alternative Name:	MHC class 1 (MHC, Class I Products)

Target Details

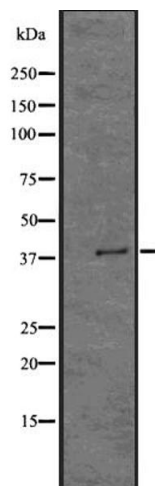
Background:	Description: Involved in the presentation of foreign antigens to the immune system. Gene: HLA-A
Molecular Weight:	41kDa
UniProt:	P01891

Application Details

Application Notes:	WB 1:1000-3000 IHC 1:200 ICC/IF
Restrictions:	For Research Use only

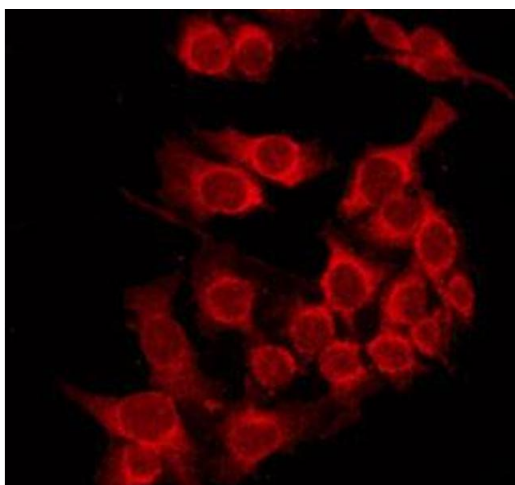
Handling

Format:	Liquid
Concentration:	1 mg/mL
Buffer:	Rabbit IgG in phosphate buffered saline , pH 7.4, 150 mM NaCl, 0.02 % sodium azide and 50 % glycerol.
Preservative:	Sodium azide
Precaution of Use:	This product contains Sodium azide: a POISONOUS AND HAZARDOUS SUBSTANCE which should be handled by trained staff only.
Storage:	-20 °C
Storage Comment:	Store at -20 °C.Stable for 12 months from date of receipt
Expiry Date:	12 months



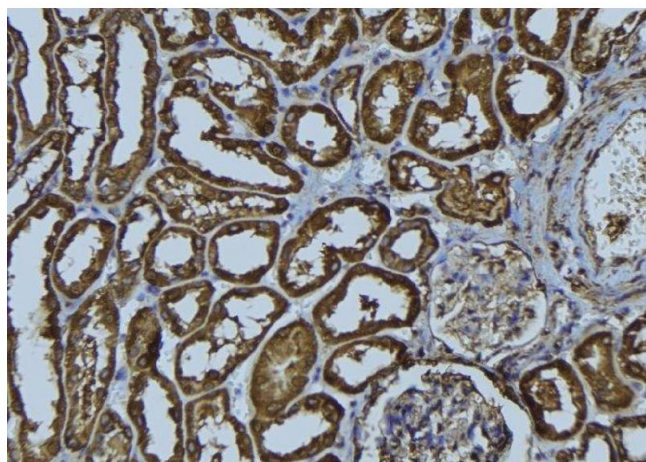
Western Blotting

Image 1. Western blot analysis of MHC class 1 using 293 whole cell lysates



Immunofluorescence (fixed cells)

Image 2. ABIN6274024 staining HepG2 by IF/ICC. The sample were fixed with PFA and permeabilized in 0.1% Triton X-100, then blocked in 10% serum for 45 minutes at 25°C. The primary antibody was diluted at 1/200 and incubated with the sample for 1 hour at 37°C. An Alexa Fluor 594 conjugated goat anti-rabbit IgG (H+L) Ab, diluted at 1/600, was used as the secondary antibody.



Immunohistochemistry

Image 3. ABIN6274024 at 1/100 staining Rat kidney tissue by IHC-P. The sample was formaldehyde fixed and a heat mediated antigen retrieval step in citrate buffer was performed. The sample was then blocked and incubated with the antibody for 1.5 hours at 22°C. An HRP conjugated goat anti-rabbit antibody was used as the secondary