

Datasheet for ABIN6263249
anti-C18orf8 antibody (C-Term)

2 Images

[Go to Product page](#)

Overview

Quantity:	100 µL
Target:	C18orf8
Binding Specificity:	C-Term
Reactivity:	Human, Mouse
Host:	Rabbit
Clonality:	Polyclonal
Conjugate:	This C18orf8 antibody is un-conjugated
Application:	Western Blotting (WB), ELISA, Immunofluorescence (IF), Immunocytochemistry (ICC)

Product Details

Immunogen:	A synthesized peptide derived from human MIC1, corresponding to a region within C-terminal amino acids.
Isotype:	IgG
Specificity:	MIC1 Antibody detects endogenous levels of total MIC1.
Purification:	The antiserum was purified by peptide affinity chromatography using SulfoLink™ Coupling Resin (Thermo Fisher Scientific).

Target Details

Target:	C18orf8
Alternative Name:	C18orf8 (C18orf8 Products)

Target Details

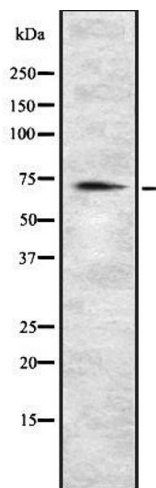
Background:	Description: Component of the CCZ1-MON1 RAB7A guanine exchange factor (GEF). Acts as a positive regulator of CCZ1-MON1A/B function necessary for endosomal/autophagic flux and efficient RAB7A localization (PubMed:29038162). Gene: C18orf8
Molecular Weight:	74 kDa
Gene ID:	29919
UniProt:	Q96DM3

Application Details

Application Notes:	WB 1:1000-3000, IF/ICC 1:100-1:500, ELISA(peptide) 1:20000-1:40000
Restrictions:	For Research Use only

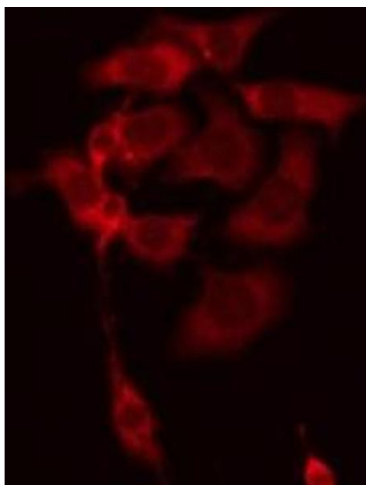
Handling

Format:	Liquid
Concentration:	1 mg/mL
Buffer:	Rabbit IgG in phosphate buffered saline , pH 7.4, 150 mM NaCl, 0.02 % sodium azide and 50 % glycerol.
Preservative:	Sodium azide
Precaution of Use:	This product contains Sodium azide: a POISONOUS AND HAZARDOUS SUBSTANCE which should be handled by trained staff only.
Storage:	-20 °C
Storage Comment:	Store at -20 °C. Stable for 12 months from date of receipt.
Expiry Date:	12 months



Western Blotting

Image 1. Western blot analysis of MIC1 using HeLa whole cell lysates



Immunofluorescence (fixed cells)

Image 2. ABIN6278591 staining HeLa by IF/ICC. The sample were fixed with PFA and permeabilized in 0.1% Triton X-100, then blocked in 10% serum for 45 minutes at 25°C. The primary antibody was diluted at 1/200 and incubated with the sample for 1 hour at 37°C. An Alexa Fluor 594 conjugated goat anti-rabbit IgG (H+L) Ab, diluted at 1/600, was used as the secondary antibody