



[Go to Product page](#)

Datasheet for ABIN6263265
anti-MKL1 antibody (N-Term)

2 Images

Overview

Quantity:	100 µL
Target:	MKL1
Binding Specificity:	N-Term
Reactivity:	Human, Mouse, Rat
Host:	Rabbit
Clonality:	Polyclonal
Conjugate:	This MKL1 antibody is un-conjugated
Application:	Western Blotting (WB), ELISA, Immunohistochemistry (IHC), Immunofluorescence (IF), Immunocytochemistry (ICC)

Product Details

Immunogen:	A synthesized peptide derived from human MKL1, corresponding to a region within N-terminal amino acids.
Isotype:	IgG
Specificity:	MKL1 Antibody detects endogenous levels of total MKL1.
Predicted Reactivity:	Chicken
Purification:	The antiserum was purified by peptide affinity chromatography using SulfoLink™ Coupling Resin (Thermo Fisher Scientific).

Target Details

Target:	MKL1
---------	------

Target Details

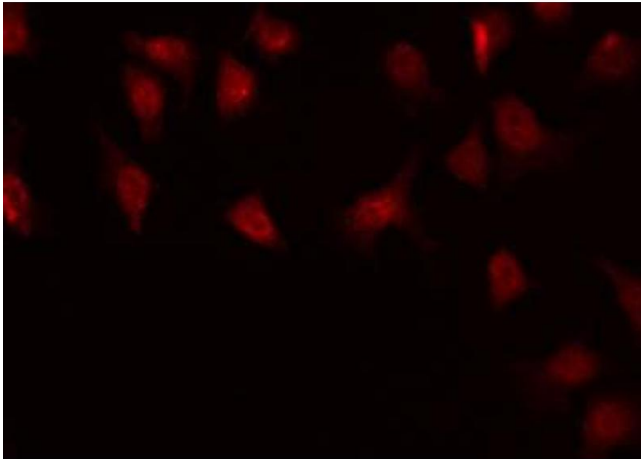
Alternative Name:	MKL1 (MKL1 Products)
Background:	Description: Transcriptional coactivator of serum response factor (SRF) with the potential to modulate SRF target genes. Suppresses TNF-induced cell death by inhibiting activation of caspases, its transcriptional activity is indispensable for the antiapoptotic function. It may up-regulate antiapoptotic molecules, which in turn inhibit caspase activation (By similarity). Gene: MKL1
Molecular Weight:	99 kDa
Gene ID:	57591
UniProt:	Q969V6

Application Details

Application Notes:	WB 1:500-1:2000, IF/ICC 1:100-1:500, IHC 1:50-1:200, ELISA(peptide) 1:20000-1:40000
Restrictions:	For Research Use only

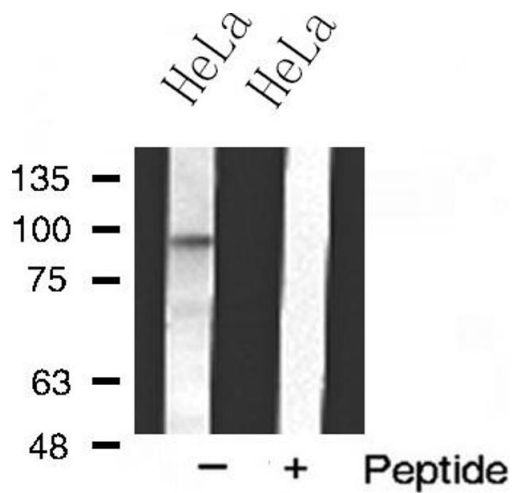
Handling

Format:	Liquid
Concentration:	1 mg/mL
Buffer:	Rabbit IgG in phosphate buffered saline , pH 7.4, 150 mM NaCl, 0.02 % sodium azide and 50 % glycerol.
Preservative:	Sodium azide
Precaution of Use:	This product contains Sodium azide: a POISONOUS AND HAZARDOUS SUBSTANCE which should be handled by trained staff only.
Storage:	-20 °C
Storage Comment:	Store at -20 °C. Stable for 12 months from date of receipt.
Expiry Date:	12 months



Immunofluorescence (fixed cells)

Image 1. ABIN6268849 staining HuvEc by IF/ICC. The sample were fixed with PFA and permeabilized in 0.1% Triton X-100, then blocked in 10% serum for 45 minutes at 25°C. The primary antibody was diluted at 1/200 and incubated with the sample for 1 hour at 37°C. An Alexa Fluor 594 conjugated goat anti-rabbit IgG (H+L) Ab, diluted at 1/600, was used as the secondary antibody.



Western Blotting

Image 2. Western blot analysis of MKL1 expression in HeLa cell extract