

Datasheet for ABIN6263269  
**anti-DUSP4 antibody (Internal Region)**[Go to Product page](#)

## 4 Images

## Overview

Quantity:	100 µL
Target:	DUSP4
Binding Specificity:	Internal Region
Reactivity:	Human, Mouse, Rat
Host:	Rabbit
Clonality:	Polyclonal
Conjugate:	This DUSP4 antibody is un-conjugated
Application:	Western Blotting (WB), Immunohistochemistry (IHC), ELISA, Immunofluorescence (IF), Immunocytochemistry (ICC)

## Product Details

Immunogen:	A synthesized peptide derived from human MKP-2, corresponding to a region within the internal amino acids.
Isotype:	IgG
Specificity:	MKP-2 Antibody detects endogenous levels of total MKP-2.
Predicted Reactivity:	Pig,Bovine,Horse,Sheep,Rabbit,Dog,Chicken,Xenopus
Purification:	The antiserum was purified by peptide affinity chromatography using SulfoLink™ Coupling Resin (Thermo Fisher Scientific).

## Target Details

Target:	DUSP4
---------	-------

## Target Details

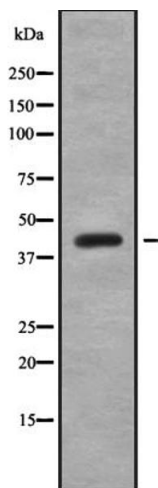
Alternative Name:	DUSP4 ( <a href="#">DUSP4 Products</a> )
Background:	Description: Regulates mitogenic signal transduction by dephosphorylating both Thr and Tyr residues on MAP kinases ERK1 and ERK2. Gene: DUSP4
Molecular Weight:	44kDa
Gene ID:	1846
UniProt:	<a href="#">Q13115</a>
Pathways:	<a href="#">Neurotrophin Signaling Pathway</a> , <a href="#">Activation of Innate immune Response</a> , <a href="#">Toll-Like Receptors Cascades</a>

## Application Details

Application Notes:	WB 1:1000, IF/ICC 1:100-1:500, IHC 1:50-1:200, ELISA(peptide) 1:20000-1:40000
Restrictions:	For Research Use only

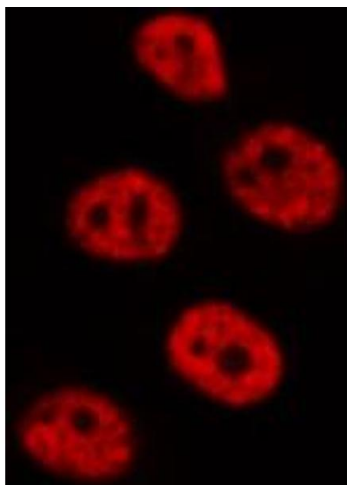
## Handling

Format:	Liquid
Concentration:	1 mg/mL
Buffer:	Rabbit IgG in phosphate buffered saline , pH 7.4, 150 mM NaCl, 0.02 % sodium azide and 50 % glycerol.
Preservative:	Sodium azide
Precaution of Use:	This product contains Sodium azide: a POISONOUS AND HAZARDOUS SUBSTANCE which should be handled by trained staff only.
Storage:	-20 °C
Storage Comment:	Store at -20 °C. Stable for 12 months from date of receipt.
Expiry Date:	12 months



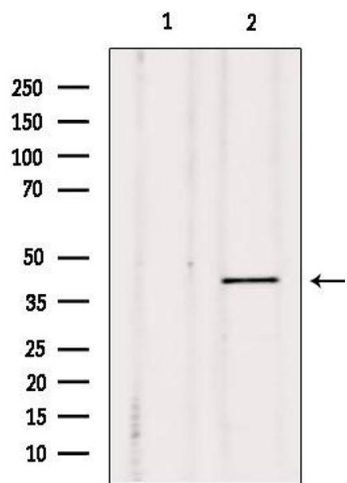
#### Western Blotting

**Image 1.** Western blot analysis of MKP-2 using RAW264.7 whole cell lysates



#### Immunofluorescence (fixed cells)

**Image 2.** ABIN6272345 staining RAW264.7 by IF/ICC. The sample were fixed with PFA and permeabilized in 0.1% Triton X-100, then blocked in 10% serum for 45 minutes at 25°C. The primary antibody was diluted at 1/200 and incubated with the sample for 1 hour at 37°C. An Alexa Fluor 594 conjugated goat anti-rabbit IgG (H+L) Ab, diluted at 1/600, was used as the secondary antibody.



#### Western Blotting

**Image 3.** Western blot analysis of extracts from Mouse cancer, using MKP-2 Antibody. Lane 1 was treated with the blocking peptide.

Please check the [product details page](#) for more images. Overall 4 images are available for ABIN6263269.