

Datasheet for ABIN6263280  
**anti-Lysine (K)-Specific Methyltransferase 2B (KMT2B)  
(Internal Region) antibody**



[Go to Product page](#)

2 Images

## Overview

Quantity:	100 µL
Target:	Lysine (K)-Specific Methyltransferase 2B (KMT2B)
Binding Specificity:	Internal Region
Reactivity:	Human
Host:	Rabbit
Clonality:	Polyclonal
Conjugate:	Un-conjugated
Application:	ELISA, Immunohistochemistry (IHC), Western Blotting (WB), Immunofluorescence (IF), Immunocytochemistry (ICC)

## Product Details

Immunogen:	A synthesized peptide derived from human MLL2, corresponding to a region within the internal amino acids.
Isotype:	IgG
Specificity:	MLL2 Antibody detects endogenous levels of total MLL2.
Predicted Reactivity:	Pig,Bovine,Sheep,Rabbit,Dog
Purification:	The antiserum was purified by peptide affinity chromatography using SulfoLink™ Coupling Resin (Thermo Fisher Scientific).

## Target Details

Target:	Lysine (K)-Specific Methyltransferase 2B (KMT2B)
---------	--

## Target Details

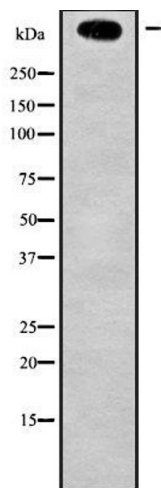
Alternative Name:	KMT2D ( <a href="#">KMT2B Products</a> )
Background:	<p>Description: Histone methyltransferase. Methylates 'Lys-4' of histone H3 (H3K4me). H3K4me represents a specific tag for epigenetic transcriptional activation. Acts as a coactivator for estrogen receptor by being recruited by ESR1, thereby activating transcription.</p> <p>Gene: KMT2D</p>
Molecular Weight:	593kDa
Gene ID:	8085
UniProt:	<a href="#">O14686</a>
Pathways:	<a href="#">Warburg Effect</a>

## Application Details

Application Notes:	WB 1:1000-3000, IHC 1:50-200, IF/ICC 1:100-1:500, ELISA(peptide) 1:20000-1:40000
Restrictions:	For Research Use only

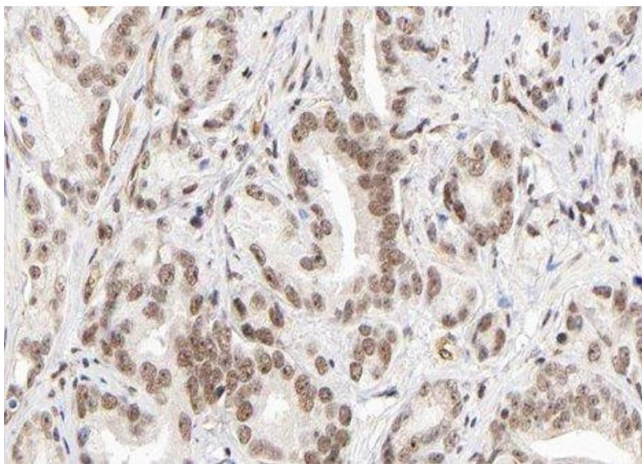
## Handling

Format:	Liquid
Concentration:	1 mg/mL
Buffer:	Rabbit IgG in phosphate buffered saline , pH 7.4, 150 mM NaCl, 0.02 % sodium azide and 50 % glycerol.
Preservative:	Sodium azide
Precaution of Use:	This product contains Sodium azide: a POISONOUS AND HAZARDOUS SUBSTANCE which should be handled by trained staff only.
Storage:	-20 °C
Storage Comment:	Store at -20 °C. Stable for 12 months from date of receipt.
Expiry Date:	12 months



### Western Blotting

**Image 1.** Western blot analysis of MLL2 using Jurkat whole cell lysates



### Immunohistochemistry

**Image 2.** ABIN6279558 at 1/100 staining human Prostate carcinoma tissue sections by IHC-P. The tissue was formaldehyde fixed and a heat mediated antigen retrieval step in citrate buffer was performed. The tissue was then blocked and incubated with the antibody for 1.5 hours at 22°C. An HRP conjugated goat anti-rabbit antibody was used as the secondary