

Datasheet for ABIN6263290
anti-MMP1 antibody (C-Term)

3 Images

1 Publication

[Go to Product page](#)

Overview

Quantity:	100 µL
Target:	MMP1
Binding Specificity:	C-Term
Reactivity:	Human
Host:	Rabbit
Clonality:	Polyclonal
Application:	Western Blotting (WB), ELISA, Immunofluorescence (IF), Immunocytochemistry (ICC)

Product Details

Immunogen:	A synthesized peptide derived from human MMP1, corresponding to a region within C-terminal amino acids.
Isotype:	IgG
Specificity:	MMP1 Antibody detects endogenous levels of total MMP1.
Predicted Reactivity:	Pig,Bovine,Horse,Sheep,Rabbit
Purification:	The antiserum was purified by peptide affinity chromatography using SulfoLink™ Coupling Resin (Thermo Fisher Scientific).

Target Details

Target:	MMP1
Alternative Name:	MMP1 (MMP1 Products)

Target Details

Background:	Description: Cleaves collagens of types I, II, and III at one site in the helical domain. Also cleaves collagens of types VII and X (PubMed:2557822, PubMed:2153297, PubMed:1645757). In case of HIV infection, interacts and cleaves the secreted viral Tat protein, leading to a decrease in neuronal Tat's mediated neurotoxicity (PubMed:16807369). Gene: MMP1
Molecular Weight:	54kDa
Gene ID:	4312
UniProt:	P03956

Application Details

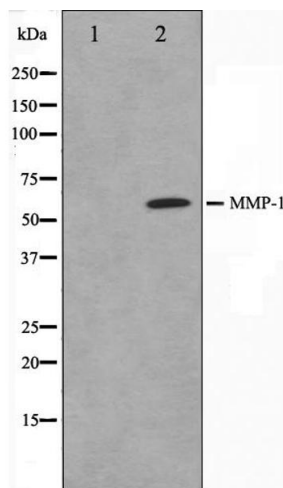
Application Notes:	WB: 1:500-1:3000, IF/ICC 1:100-1:500, ELISA(peptide) 1:20000-1:40000
Restrictions:	For Research Use only

Handling

Format:	Liquid
Concentration:	1 mg/mL
Buffer:	Rabbit IgG in phosphate buffered saline , pH 7.4, 150 mM NaCl, 0.02 % sodium azide and 50 % glycerol.
Preservative:	Sodium azide
Precaution of Use:	This product contains Sodium azide: a POISONOUS AND HAZARDOUS SUBSTANCE which should be handled by trained staff only.
Storage:	-20 °C
Storage Comment:	Store at -20 °C. Stable for 12 months from date of receipt.
Expiry Date:	12 months

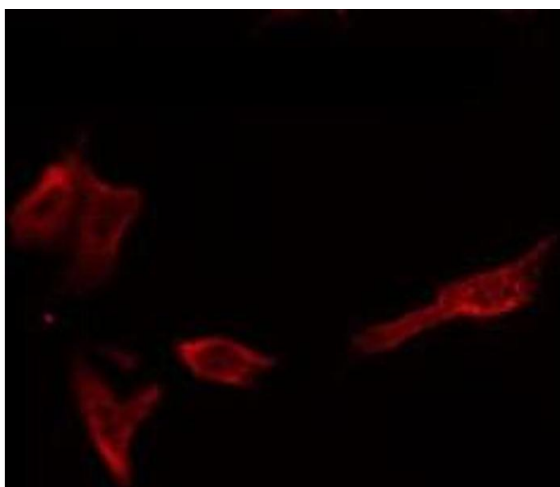
Publications

Product cited in:	Li, Xiao, Yang, Qin, Gao, Liu, Zhou: "Parthenolide attenuated bleomycin-induced pulmonary fibrosis via the NF- κ B/Snail signaling pathway." in: Respiratory research , Vol. 19, Issue 1, pp. 111, (2018) (PubMed).
-------------------	---



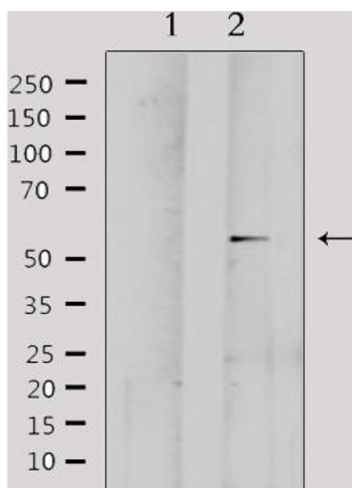
Western Blotting

Image 1. Western blot analysis on HepG2 cell lysate using MMP1 Antibody. The lane on the left is treated with the antigen-specific peptide.



Immunofluorescence (fixed cells)

Image 2. ABIN6266589 staining HepG2 by IF/ICC. The sample were fixed with PFA and permeabilized in 0.1% Triton X-100, then blocked in 10% serum for 45 minutes at 25°C. The primary antibody was diluted at 1/200 and incubated with the sample for 1 hour at 37°C. An Alexa Fluor 594 conjugated goat anti-rabbit IgG (H+L) Ab, diluted at 1/600, was used as the secondary antibody.



Western Blotting

Image 3. Western blot analysis of extracts from Hela, using MMP1 Antibody. Lane 1 was treated with the antigen-specific peptide.