

Datasheet for ABIN6263294  
**anti-MMP14 antibody (C-Term)**

## 5 Images

[Go to Product page](#)

## Overview

Quantity:	100 µL
Target:	MMP14
Binding Specificity:	C-Term
Reactivity:	Human, Mouse, Rat
Host:	Rabbit
Clonality:	Polyclonal
Application:	Western Blotting (WB), ELISA, Immunohistochemistry (IHC), Immunocytochemistry (ICC), Immunofluorescence (IF)

## Product Details

Immunogen:	A synthesized peptide derived from human MMP14, corresponding to a region within C-terminal amino acids.
Isotype:	IgG
Specificity:	MMP14 Antibody detects endogenous levels of total MMP14.
Predicted Reactivity:	Pig,Bovine,Horse,Sheep,Rabbit,Dog
Purification:	The antiserum was purified by peptide affinity chromatography using SulfoLink™ Coupling Resin (Thermo Fisher Scientific).

## Target Details

Target:	MMP14
Alternative Name:	MMP14 ( <a href="#">MMP14 Products</a> )

## Target Details

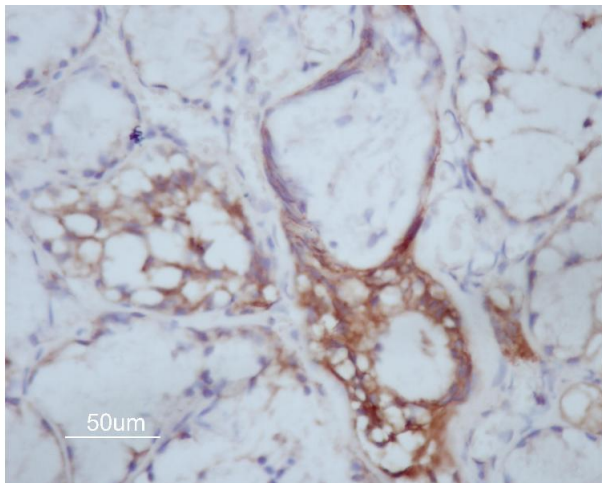
Background:	<p>Description: Endopeptidase that degrades various components of the extracellular matrix such as collagen. Activates progelatinase A. Essential for pericellular collagenolysis and modeling of skeletal and extraskeletal connective tissues during development (By similarity). May be involved in actin cytoskeleton reorganization by cleaving PTK7 (PubMed:20837484). Acts as a positive regulator of cell growth and migration via activation of MMP15. Involved in the formation of the fibrovascular tissues in association with pro-MMP2 (PubMed:12714657). Cleaves ADGRB1 to release vasculostatin-40 which inhibits angiogenesis (PubMed:22330140).</p> <p>Gene: MMP14</p>
Molecular Weight:	65kDa
Gene ID:	4323
UniProt:	<a href="#">P50281</a>
Pathways:	<a href="#">Autophagy</a>

## Application Details

Application Notes:	WB: 1:500-1:3000, IHC: 1:50-1:200, IF/ICC 1:100-1:500, ELISA(peptide) 1:20000-1:40000
Restrictions:	For Research Use only

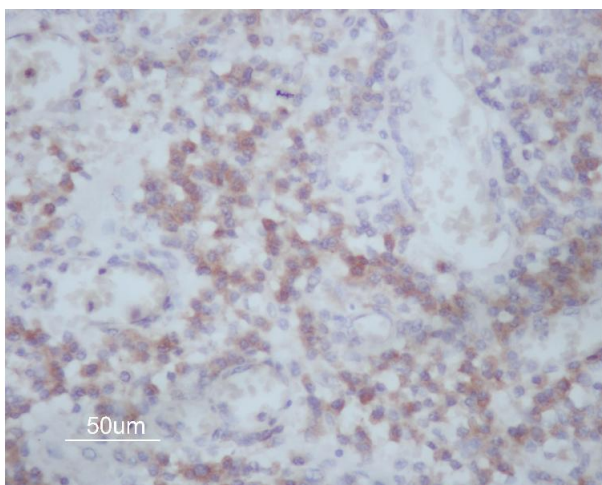
## Handling

Format:	Liquid
Concentration:	1 mg/mL
Buffer:	Rabbit IgG in phosphate buffered saline , pH 7.4, 150 mM NaCl, 0.02 % sodium azide and 50 % glycerol.
Preservative:	Sodium azide
Precaution of Use:	This product contains Sodium azide: a POISONOUS AND HAZARDOUS SUBSTANCE which should be handled by trained staff only.
Storage:	-20 °C
Storage Comment:	Store at -20 °C. Stable for 12 months from date of receipt.
Expiry Date:	12 months



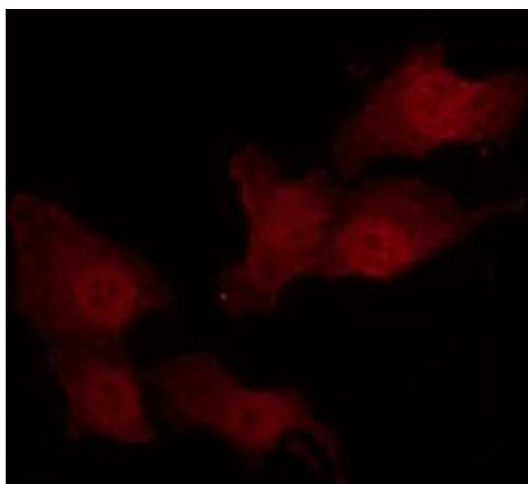
#### Immunohistochemistry

**Image 1.** ABIN6266591 at 1/200 staining human Oral squamous cell carcinoma sections by IHC-P. The tissue was formaldehyde fixed and a heat mediated antigen retrieval step in citrate buffer was performed. The tissue was then blocked and incubated with the antibody for 1.5 hours at 22°C. An HRP conjugated goat anti-rabbit antibody was used as the secondary.



#### Immunohistochemistry

**Image 2.** ABIN6266591 at 1/200 staining human Oral squamous cell carcinoma sections by IHC-P. The tissue was formaldehyde fixed and a heat mediated antigen retrieval step in citrate buffer was performed. The tissue was then blocked and incubated with the antibody for 1.5 hours at 22°C. An HRP conjugated goat anti-rabbit antibody was used as the secondary.



#### Immunofluorescence (fixed cells)

**Image 3.** ABIN6266591 staining NIH-3T3 by IF/ICC. The sample were fixed with PFA and permeabilized in 0.1% Triton X-100, then blocked in 10% serum for 45 minutes at 25°C. The primary antibody was diluted at 1/200 and incubated with the sample for 1 hour at 37°C. An Alexa Fluor 594 conjugated goat anti-rabbit IgG (H+L) Ab, diluted at 1/600, was used as the secondary antibody.

Please check the [product details page](#) for more images. Overall 5 images are available for ABIN6263294.