

Datasheet for ABIN6263302
anti-MMP23B antibody (C-Term)

3 Images

[Go to Product page](#)

Overview

Quantity:	100 µL
Target:	MMP23B
Binding Specificity:	C-Term
Reactivity:	Human, Rat, Mouse
Host:	Rabbit
Clonality:	Polyclonal
Conjugate:	This MMP23B antibody is un-conjugated
Application:	Western Blotting (WB), Immunohistochemistry (IHC), ELISA, Immunocytochemistry (ICC), Immunofluorescence (IF)

Product Details

Immunogen:	A synthesized peptide derived from human MMP23, corresponding to a region within C-terminal amino acids.
Isotype:	IgG
Specificity:	MMP23 Antibody detects endogenous levels of total MMP23.
Predicted Reactivity:	Bovine
Purification:	The antiserum was purified by peptide affinity chromatography using SulfoLink™ Coupling Resin (Thermo Fisher Scientific).

Target Details

Target:	MMP23B
---------	--------

Target Details

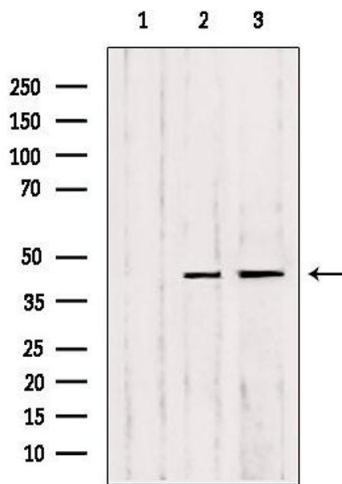
Alternative Name:	MMP23A, MMP23B (MMP23B Products)
Background:	Description: Protease. May regulate the surface expression of some potassium channels by retaining them in the endoplasmic reticulum (By similarity). Gene: MMP23A, MMP23B
Molecular Weight:	44kDa
Gene ID:	8510
UniProt:	O75900

Application Details

Application Notes:	WB: 1:500-1:3000, IF/ICC 1:100-1:500, IHC 1:50-1:200, ELISA(peptide) 1:20000-1:40000
Restrictions:	For Research Use only

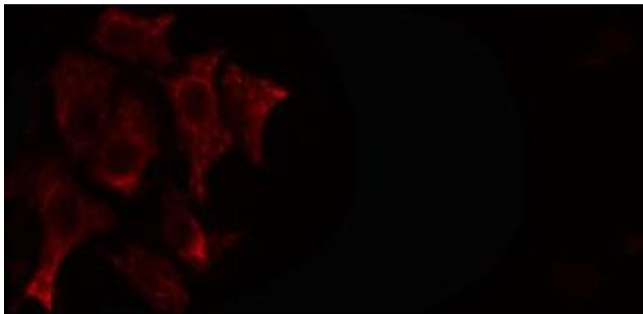
Handling

Format:	Liquid
Concentration:	1 mg/mL
Buffer:	Rabbit IgG in phosphate buffered saline , pH 7.4, 150 mM NaCl, 0.02 % sodium azide and 50 % glycerol.
Preservative:	Sodium azide
Precaution of Use:	This product contains Sodium azide: a POISONOUS AND HAZARDOUS SUBSTANCE which should be handled by trained staff only.
Storage:	-20 °C
Storage Comment:	Store at -20 °C. Stable for 12 months from date of receipt.
Expiry Date:	12 months



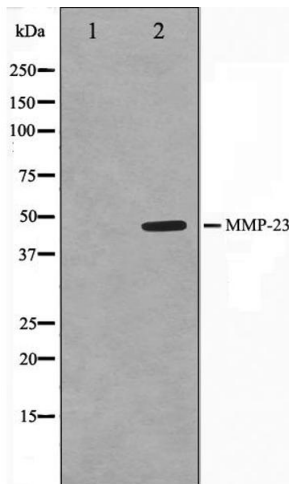
Western Blotting

Image 1. Western blot analysis of extracts from various samples, using MMP23 Antibody. Lane 1: HeLa treated with blocking peptide. Lane 2: HeLa; Lane 3: Hepg2;



Immunofluorescence (fixed cells)

Image 2. ABIN6266595 staining SKOV3 cells by IF/ICC. The sample were fixed with PFA and permeabilized in 0.1% Triton X-100, then blocked in 10% serum for 45 minutes at 25°C. The primary antibody was diluted at 1/200 and incubated with the sample for 1 hour at 37°C. An Alexa Fluor 594 conjugated goat anti-rabbit IgG (H+L) antibody (Cat.# S0006), diluted at 1/600, was used as secondary antibody.



Western Blotting

Image 3. Western blot analysis on SK-OV3 cell lysate using MMP23 Antibody. The lane on the left is treated with the antigen-specific peptide.