



[Go to Product page](#)

Datasheet for ABIN6263304

anti-MMP3 antibody (C-Term)

3 Images

1 Publication

Overview

Quantity:	100 µL
Target:	MMP3
Binding Specificity:	C-Term
Reactivity:	Human, Mouse, Rat
Host:	Rabbit
Clonality:	Polyclonal
Conjugate:	This MMP3 antibody is un-conjugated
Application:	Western Blotting (WB), Immunohistochemistry (IHC), ELISA, Immunocytochemistry (ICC), Immunofluorescence (IF)

Product Details

Immunogen:	A synthesized peptide derived from human MMP3, corresponding to a region within C-terminal amino acids.
Isotype:	IgG
Specificity:	MMP3 Antibody detects endogenous levels of total MMP3.
Predicted Reactivity:	Horse, Sheep, Rabbit, Dog
Purification:	The antiserum was purified by peptide affinity chromatography using SulfoLink™ Coupling Resin (Thermo Fisher Scientific).

Target Details

Target:	MMP3
---------	------

Target Details

Alternative Name:	MMP3 (MMP3 Products)
Background:	Description: Can degrade fibronectin, laminin, gelatins of type I, III, IV, and V, collagens III, IV, X, and IX, and cartilage proteoglycans. Activates procollagenase. Gene: MMP3
Molecular Weight:	53kDa
Gene ID:	4314
UniProt:	P08254

Application Details

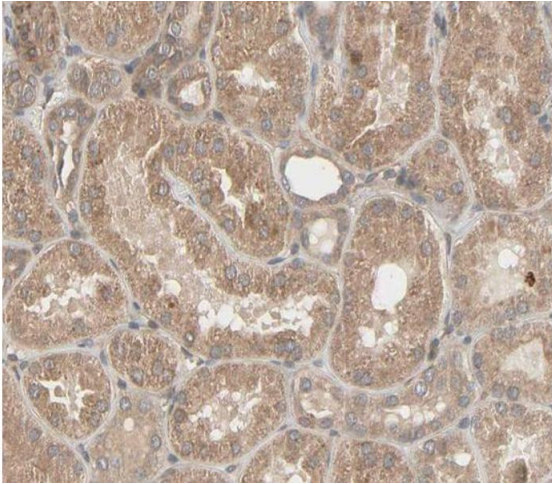
Application Notes:	WB: 1:500-1:3000, IHC: 1:50-1:200, IF/ICC 1:100-1:500, ELISA(peptide) 1:20000-1:40000
Restrictions:	For Research Use only

Handling

Format:	Liquid
Concentration:	1 mg/mL
Buffer:	Rabbit IgG in phosphate buffered saline , pH 7.4, 150 mM NaCl, 0.02 % sodium azide and 50 % glycerol.
Preservative:	Sodium azide
Precaution of Use:	This product contains Sodium azide: a POISONOUS AND HAZARDOUS SUBSTANCE which should be handled by trained staff only.
Storage:	-20 °C
Storage Comment:	Store at -20 °C. Stable for 12 months from date of receipt.
Expiry Date:	12 months

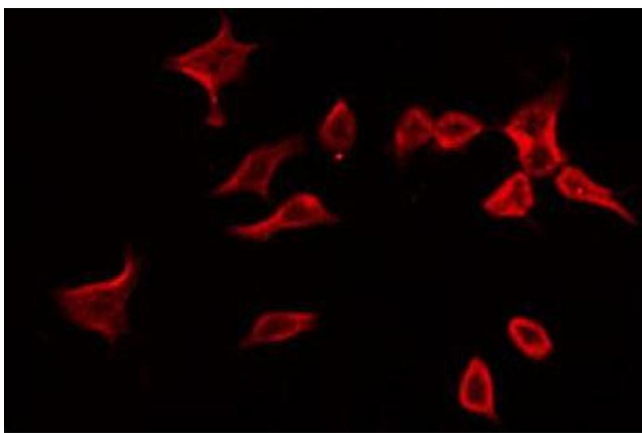
Publications

Product cited in:	Huang, Zhang, Hou, Wang, Liu, Zhang, Chen, Zhu: "LncRNA AK023391 promotes tumorigenesis and invasion of gastric cancer through activation of the PI3K/Akt signaling pathway." in: Journal of experimental & clinical cancer research : CR , Vol. 36, Issue 1, pp. 194, (2018) (PubMed).
-------------------	--



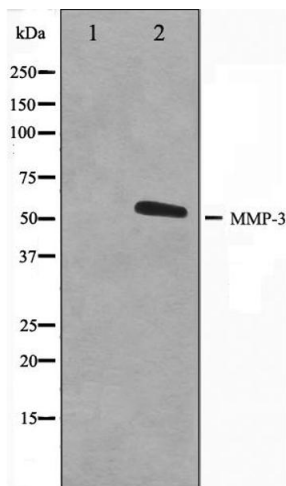
Immunohistochemistry

Image 1. ABIN6266596 at 1/100 staining human kidney tissue sections by IHC-P. The tissue was formaldehyde fixed and a heat mediated antigen retrieval step in citrate buffer was performed. The tissue was then blocked and incubated with the antibody for 1.5 hours at 22 °C. An HRP conjugated goat anti-rabbit antibody was used as the secondary.



Immunofluorescence (fixed cells)

Image 2. ABIN6266596 staining 293 by IF/ICC. The sample were fixed with PFA and permeabilized in 0.1% Triton X-100, then blocked in 10% serum for 45 minutes at 25°C. The primary antibody was diluted at 1/200 and incubated with the sample for 1 hour at 37°C. An Alexa Fluor 594 conjugated goat anti-rabbit IgG (H+L) Ab, diluted at 1/600, was used as the secondary antibody.



Western Blotting

Image 3. Western blot analysis on 293 cell lysate using MMP3 Antibody. The lane on the left is treated with the antigen-specific peptide.