



[Go to Product page](#)

Datasheet for ABIN6263341
anti-MPP5 antibody (C-Term)

3 Images

Overview

Quantity:	100 µL
Target:	MPP5
Binding Specificity:	C-Term
Reactivity:	Human, Mouse, Rat
Host:	Rabbit
Clonality:	Polyclonal
Conjugate:	This MPP5 antibody is un-conjugated
Application:	Western Blotting (WB), Immunohistochemistry (IHC)

Product Details

Immunogen:	A synthesized peptide derived from human MPP5, corresponding to a region within C-terminal amino acids.
Isotype:	IgG
Specificity:	MPP5 Antibody detects endogenous levels of total MPP5.
Predicted Reactivity:	Pig,Bovine,Horse,Sheep,Rabbit,Dog,Chicken,Xenopus
Purification:	The antiserum was purified by peptide affinity chromatography using SulfoLink™ Coupling Resin (Thermo Fisher Scientific).

Target Details

Target:	MPP5
---------	------

Target Details

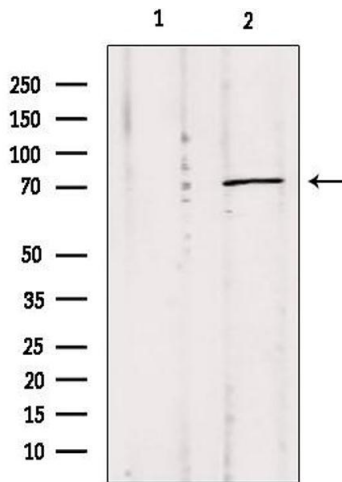
Alternative Name:	MPP5 (MPP5 Products)
Background:	Description: May play a role in tight junctions biogenesis and in the establishment of cell polarity in epithelial cells. May modulate SC6A1/GAT1-mediated GABA uptake by stabilizing the transporter. Required for localization of EZR to the apical membrane of parietal cells and may play a role in the dynamic remodeling of the apical cytoskeleton (By similarity). Gene: MPP5
Molecular Weight:	70-75kDa
Gene ID:	64398
UniProt:	Q8N3R9
Pathways:	Nucleotide Phosphorylation , Tube Formation , Asymmetric Protein Localization

Application Details

Application Notes:	WB 1:500-1:2000, IHC 1:50-1:200
Restrictions:	For Research Use only

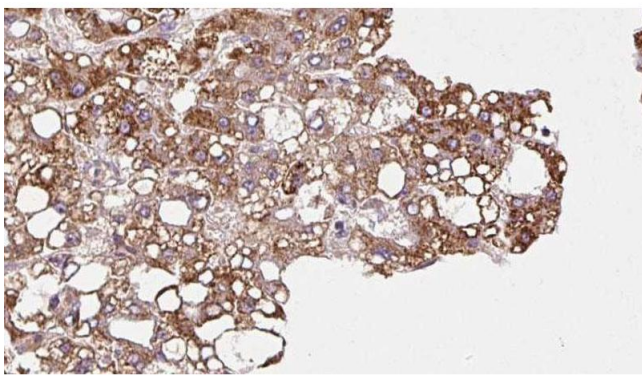
Handling

Format:	Liquid
Concentration:	1 mg/mL
Buffer:	Rabbit IgG in phosphate buffered saline , pH 7.4, 150 mM NaCl, 0.02 % sodium azide and 50 % glycerol.
Preservative:	Sodium azide
Precaution of Use:	This product contains Sodium azide: a POISONOUS AND HAZARDOUS SUBSTANCE which should be handled by trained staff only.
Storage:	-20 °C
Storage Comment:	Store at -20 °C. Stable for 12 months from date of receipt.
Expiry Date:	12 months



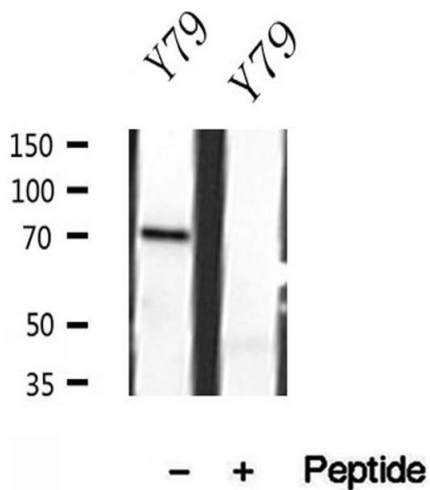
Western Blotting

Image 1. Western blot analysis of extracts from Mouse Myeloma cell, using MPP5 antibody. Lane 1 was treated with the blocking peptide.



Immunohistochemistry

Image 2. ABIN6272902 at 1/100 staining Human liver cancer tissue by IHC-P. The sample was formaldehyde fixed and a heat mediated antigen retrieval step in citrate buffer was performed. The sample was then blocked and incubated with the antibody for 1.5 hours at 22°C. An HRP conjugated goat anti-rabbit antibody was used as the secondary.



Western Blotting

Image 3. Western blot analysis of extracts of Y79 cells, using MPP5 antibody.