

Datasheet for ABIN6263342  
**anti-MPV17 antibody (Internal Region)**[Go to Product page](#)

## 3 Images

## Overview

Quantity:	100 µL
Target:	MPV17
Binding Specificity:	Internal Region
Reactivity:	Human, Mouse, Rat
Host:	Rabbit
Clonality:	Polyclonal
Conjugate:	This MPV17 antibody is un-conjugated
Application:	Western Blotting (WB), Immunohistochemistry (IHC)

## Product Details

Immunogen:	A synthesized peptide derived from human MPV17, corresponding to a region within the internal amino acids.
Isotype:	IgG
Specificity:	MPV17 Antibody detects endogenous levels of total MPV17.
Predicted Reactivity:	Pig,Bovine,Horse,Sheep,Rabbit,Dog,Chicken
Purification:	The antiserum was purified by peptide affinity chromatography using SulfoLink™ Coupling Resin (Thermo Fisher Scientific).

## Target Details

Target:	MPV17
---------	-------

## Target Details

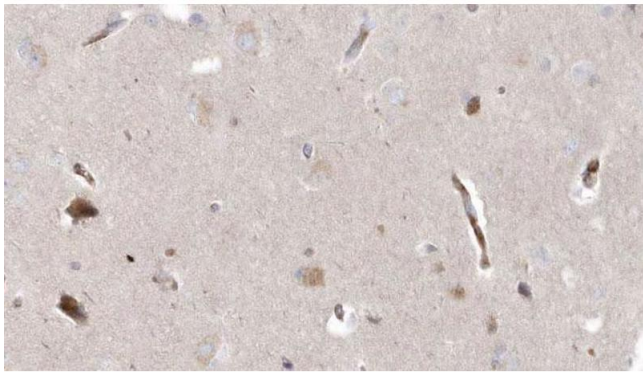
Alternative Name:	MPV17 ( <a href="#">MPV17 Products</a> )
Background:	Description: Involved in mitochondria homeostasis. May be involved in the metabolism of reactive oxygen species and control of oxidative phosphorylation and mitochondrial DNA (mtDNA) maintenance. Gene: MPV17
Molecular Weight:	20kDa
Gene ID:	4358
UniProt:	<a href="#">P39210</a>
Pathways:	<a href="#">Sensory Perception of Sound</a>

## Application Details

Application Notes:	WB 1:500-1:2000, IHC 1:50-1:200
Restrictions:	For Research Use only

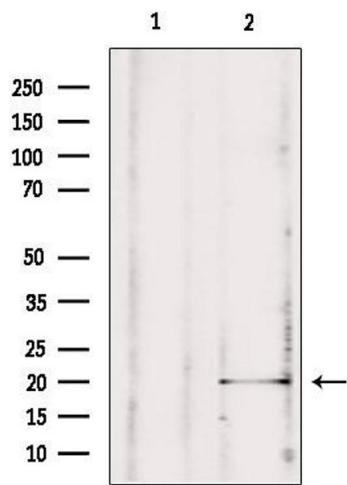
## Handling

Format:	Liquid
Concentration:	1 mg/mL
Buffer:	Rabbit IgG in phosphate buffered saline , pH 7.4, 150 mM NaCl, 0.02 % sodium azide and 50 % glycerol.
Preservative:	Sodium azide
Precaution of Use:	This product contains Sodium azide: a POISONOUS AND HAZARDOUS SUBSTANCE which should be handled by trained staff only.
Storage:	-20 °C
Storage Comment:	Store at -20 °C. Stable for 12 months from date of receipt.
Expiry Date:	12 months



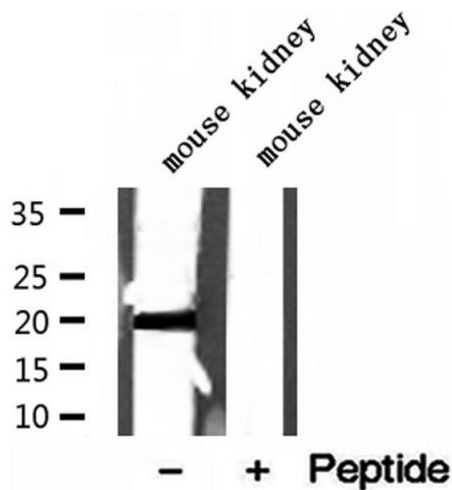
### Immunohistochemistry

**Image 1.** ABIN6272964 at 1/100 staining Human brain cancer tissue by IHC-P. The sample was formaldehyde fixed and a heat mediated antigen retrieval step in citrate buffer was performed. The sample was then blocked and incubated with the antibody for 1.5 hours at 22°C. An HRP conjugated goat anti-rabbit antibody was used as the secondary.



### Western Blotting

**Image 2.** Western blot analysis of extracts from rat brain, using MPV17 antibody. Lane 1 was treated with the blocking peptide.



### Western Blotting

**Image 3.** Western blot analysis of extracts of mouse kidney tissue, using MPV17 antibody.