

Datasheet for ABIN6263347
anti-MYL12A antibody (C-Term)[Go to Product page](#)

1 Image

Overview

Quantity:	100 µL
Target:	MYL12A
Binding Specificity:	C-Term
Reactivity:	Human
Host:	Rabbit
Clonality:	Polyclonal
Conjugate:	This MYL12A antibody is un-conjugated
Application:	Western Blotting (WB), ELISA

Product Details

Immunogen:	A synthesized peptide derived from human MYL12A, corresponding to a region within C-terminal amino acids.
Isotype:	IgG
Specificity:	MYL12A Antibody detects endogenous levels of total MYL12A.
Purification:	The antiserum was purified by peptide affinity chromatography using SulfoLink™ Coupling Resin (Thermo Fisher Scientific).

Target Details

Target:	MYL12A
Alternative Name:	MYL12A (MYL12A Products)

Target Details

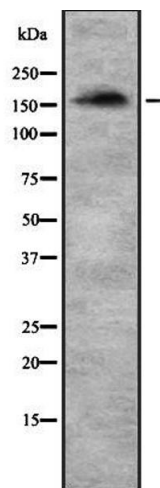
Background:	Description: Myosin regulatory subunit that plays an important role in regulation of both smooth muscle and nonmuscle cell contractile activity via its phosphorylation. Implicated in cytokinesis, receptor capping, and cell locomotion (By similarity). Gene: MYL12A
Molecular Weight:	167 kDa
Gene ID:	10627
UniProt:	P19105

Application Details

Application Notes:	WB 1:1000-3000, ELISA(peptide) 1:20000-1:40000
Restrictions:	For Research Use only

Handling

Format:	Liquid
Concentration:	1 mg/mL
Buffer:	Rabbit IgG in phosphate buffered saline , pH 7.4, 150 mM NaCl, 0.02 % sodium azide and 50 % glycerol.
Preservative:	Sodium azide
Precaution of Use:	This product contains Sodium azide: a POISONOUS AND HAZARDOUS SUBSTANCE which should be handled by trained staff only.
Storage:	-20 °C
Storage Comment:	Store at -20 °C. Stable for 12 months from date of receipt.
Expiry Date:	12 months



Western Blotting

Image 1. Western blot analysis of MRC2 using HeLa whole lysates.