

Datasheet for ABIN6263356

**anti-MYL12B antibody****2** Images[Go to Product page](#)

## Overview

Quantity:	100 µL
Target:	MYL12B
Reactivity:	Human, Mouse, Rat
Host:	Rabbit
Clonality:	Polyclonal
Conjugate:	This MYL12B antibody is un-conjugated
Application:	Western Blotting (WB), ELISA, Immunofluorescence (IF), Immunocytochemistry (ICC)

## Product Details

Immunogen:	A synthesized peptide derived from human MRLC2
Isotype:	IgG
Specificity:	MRLC2 Antibody detects endogenous levels of total MRLC2
Cross-Reactivity:	Human, Mouse (Murine), Rat (Rattus)
Purification:	The antiserum was purified by peptide affinity chromatography using SulfoLink™ Coupling Resin (Thermo Fisher Scientific).

## Target Details

Target:	MYL12B
Alternative Name:	MRLC2 ( <a href="#">MYL12B Products</a> )
Background:	Description: Myosin regulatory subunit that plays an important role in regulation of both smooth

## Target Details

muscle and nonmuscle cell contractile activity via its phosphorylation. Implicated in cytokinesis, receptor capping, and cell locomotion.

Gene: MYL9

Molecular Weight: 18kDa

Gene ID: 10398

UniProt: [P24844](#), [P19105](#)

Pathways: [Feeding Behaviour](#)

## Application Details

Application Notes: WB 1:1000, IF/ICC 1:100-1:500

Restrictions: For Research Use only

## Handling

Format: Liquid

Concentration: 1 mg/mL

Buffer: Rabbit IgG in phosphate buffered saline , pH 7.4, 150 mM NaCl, 0.02 % sodium azide and 50 % glycerol.

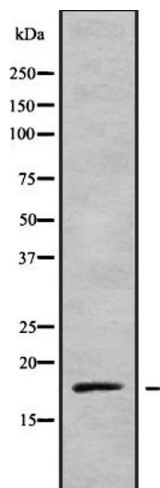
Preservative: Sodium azide

Precaution of Use: This product contains Sodium azide: a POISONOUS AND HAZARDOUS SUBSTANCE which should be handled by trained staff only.

Storage: -20 °C

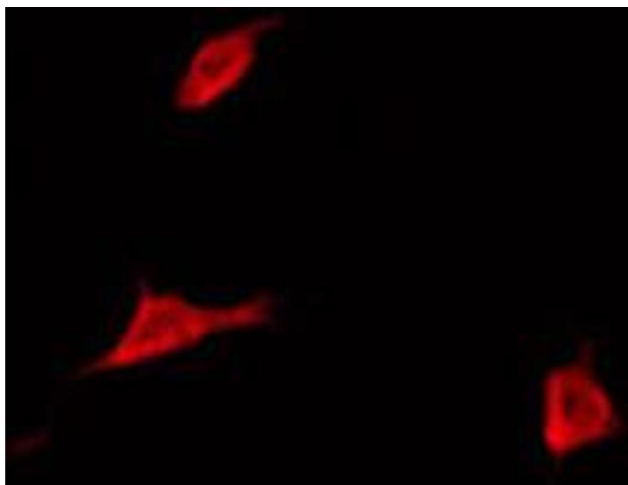
Storage Comment: Store at -20 °C.Stable for 12 months from date of receipt

Expiry Date: 12 months



### Western Blotting

**Image 1.** Western blot analysis of MRLC2 using COLO205 whole cell lysates



### Immunofluorescence (fixed cells)

**Image 2.** ABIN6272350 staining COLO205 by IF/ICC. The sample were fixed with PFA and permeabilized in 0.1% Triton X-100, then blocked in 10% serum for 45 minutes at 25°C. The primary antibody was diluted at 1/200 and incubated with the sample for 1 hour at 37°C. An Alexa Fluor 594 conjugated goat anti-rabbit IgG (H+L) Ab, diluted at 1/600, was used as the secondary antibody.