

Datasheet for ABIN6263359
anti-ABCC6 antibody (Internal Region)[Go to Product page](#)

3 Images

Overview

Quantity:	100 µL
Target:	ABCC6
Binding Specificity:	Internal Region
Reactivity:	Human, Mouse, Rat
Host:	Rabbit
Clonality:	Polyclonal
Conjugate:	This ABCC6 antibody is un-conjugated
Application:	Western Blotting (WB), Immunohistochemistry (IHC), ELISA

Product Details

Immunogen:	A synthesized peptide derived from human MRP6, corresponding to a region within the internal amino acids.
Isotype:	IgG
Specificity:	MRP6 Antibody detects endogenous levels of total MRP6.
Predicted Reactivity:	Bovine,Horse,Sheep
Purification:	The antiserum was purified by peptide affinity chromatography using SulfoLink™ Coupling Resin (Thermo Fisher Scientific).

Target Details

Target:	ABCC6
---------	-------

Target Details

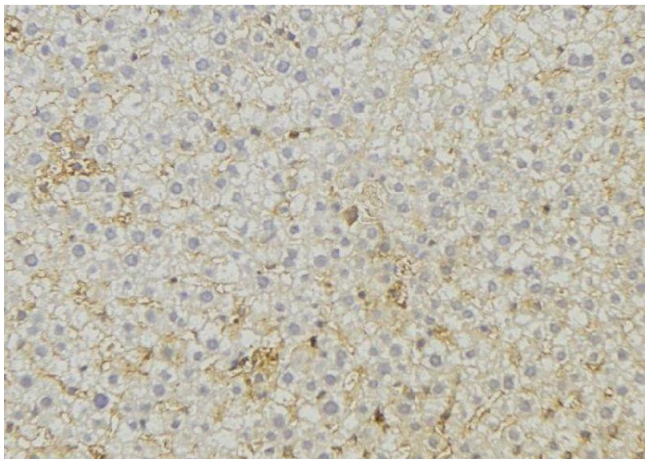
Alternative Name:	ABCC6 (ABCC6 Products)
Background:	Description: Isoform 1: May participate directly in the active transport of drugs into subcellular organelles or influence drug distribution indirectly. Transports glutathione conjugates as leukotriene-c4 (LTC4) and N-ethylmaleimide S-glutathione (NEM-GS). Gene: ABCC6
Molecular Weight:	165 kDa
Gene ID:	368
UniProt:	O95255

Application Details

Application Notes:	WB 1:1000-3000, IHC 1:200, ELISA(peptide) 1:20000-1:40000
Restrictions:	For Research Use only

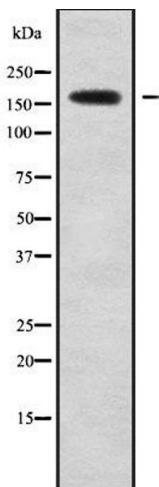
Handling

Format:	Liquid
Concentration:	1 mg/mL
Buffer:	Rabbit IgG in phosphate buffered saline , pH 7.4, 150 mM NaCl, 0.02 % sodium azide and 50 % glycerol.
Preservative:	Sodium azide
Precaution of Use:	This product contains Sodium azide: a POISONOUS AND HAZARDOUS SUBSTANCE which should be handled by trained staff only.
Storage:	-20 °C
Storage Comment:	Store at -20 °C. Stable for 12 months from date of receipt.
Expiry Date:	12 months



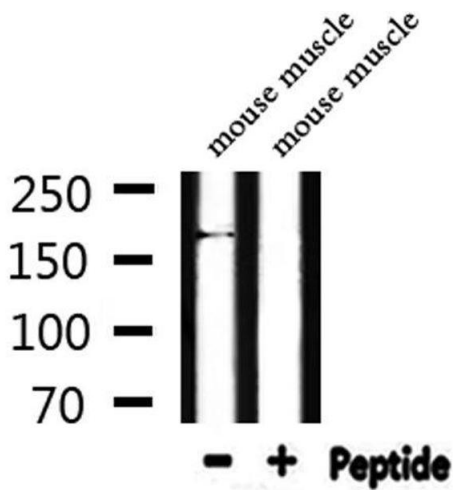
Immunohistochemistry

Image 1. ABIN6279555 at 1/100 staining Mouse liver tissue by IHC-P. The sample was formaldehyde fixed and a heat mediated antigen retrieval step in citrate buffer was performed. The sample was then blocked and incubated with the antibody for 1.5 hours at 22°C. An HRP conjugated goat anti-rabbit antibody was used as the secondary



Western Blotting

Image 2. Western blot analysis of MRP6 using Jurkat whole cell lysates



Western Blotting

Image 3. Western blot analysis of extracts from mouse muscle, using MRP6 Antibody.