



[Go to Product page](#)

Datasheet for ABIN6263378

## anti-MRPS15 antibody (Internal Region)

### 2 Images

#### Overview

Quantity:	100 µL
Target:	MRPS15
Binding Specificity:	Internal Region
Reactivity:	Human, Mouse, Rat
Host:	Rabbit
Clonality:	Polyclonal
Conjugate:	This MRPS15 antibody is un-conjugated
Application:	Western Blotting (WB), ELISA, Immunohistochemistry (IHC), Immunofluorescence (IF), Immunocytochemistry (ICC)

#### Product Details

Immunogen:	A synthesized peptide derived from human MRPS15, corresponding to a region within the internal amino acids.
Isotype:	IgG
Specificity:	MRPS15 Antibody detects endogenous levels of total MRPS15.
Predicted Reactivity:	Sheep
Purification:	The antiserum was purified by peptide affinity chromatography using SulfoLink™ Coupling Resin (Thermo Fisher Scientific).

#### Target Details

Target:	MRPS15
---------	--------

## Target Details

---

Alternative Name: MRPS15 ([MRPS15 Products](#))

Background: Gene: MRPS15

Molecular Weight: 30kDa

Gene ID: 64960

UniProt: [P82914](#)

## Application Details

---

Application Notes: WB 1:1000-3000, IF/ICC 1:100-1:500, IHC 1:50-1:200, ELISA(peptide) 1:20000-1:40000

Restrictions: For Research Use only

## Handling

---

Format: Liquid

Concentration: 1 mg/mL

Buffer: Rabbit IgG in phosphate buffered saline , pH 7.4, 150 mM NaCl, 0.02 % sodium azide and 50 % glycerol.

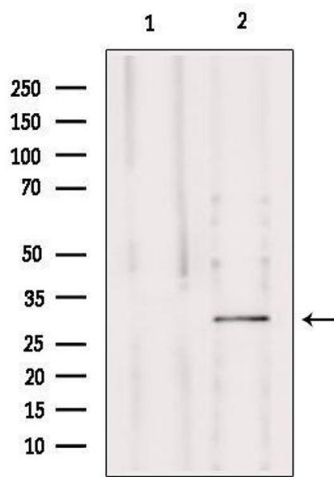
Preservative: Sodium azide

Precaution of Use: This product contains Sodium azide: a POISONOUS AND HAZARDOUS SUBSTANCE which should be handled by trained staff only.

Storage: -20 °C

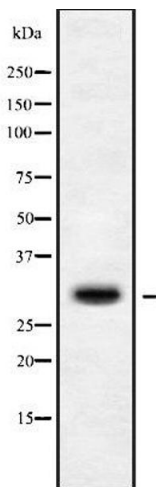
Storage Comment: Store at -20 °C. Stable for 12 months from date of receipt.

Expiry Date: 12 months



### Western Blotting

**Image 1.** Western blot analysis of extracts from mouse brain, using MRPS15 Antibody. Lane 1 was treated with the blocking peptide.



### Western Blotting

**Image 2.** Western blot analysis of MRPS15 using Jurkat whole cell lysates