



[Go to Product page](#)

Datasheet for ABIN6263382

anti-MRPS31 antibody (Internal Region)

1 Image

Overview

Quantity:	100 µL
Target:	MRPS31
Binding Specificity:	Internal Region
Reactivity:	Human
Host:	Rabbit
Clonality:	Polyclonal
Conjugate:	This MRPS31 antibody is un-conjugated
Application:	Western Blotting (WB), ELISA, Immunofluorescence (IF), Immunocytochemistry (ICC)

Product Details

Immunogen:	A synthesized peptide derived from human MRPS31, corresponding to a region within the internal amino acids.
Isotype:	IgG
Specificity:	MRPS31 Antibody detects endogenous levels of total MRPS31.
Predicted Reactivity:	Bovine,Horse,Sheep,Dog
Purification:	The antiserum was purified by peptide affinity chromatography using SulfoLink™ Coupling Resin (Thermo Fisher Scientific).

Target Details

Target:	MRPS31
---------	--------

Target Details

Alternative Name: MRPS31 ([MRPS31 Products](#))

Background: Gene: MRPS31

Molecular Weight: 45 kDa

Gene ID: 10240

UniProt: [Q92665](#)

Application Details

Application Notes: WB 1:1000-3000, IF/ICC 1:100-1:500, ELISA(peptide) 1:20000-1:40000

Restrictions: For Research Use only

Handling

Format: Liquid

Concentration: 1 mg/mL

Buffer: Rabbit IgG in phosphate buffered saline , pH 7.4, 150 mM NaCl, 0.02 % sodium azide and 50 % glycerol.

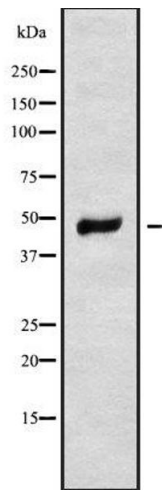
Preservative: Sodium azide

Precaution of Use: This product contains Sodium azide: a POISONOUS AND HAZARDOUS SUBSTANCE which should be handled by trained staff only.

Storage: -20 °C

Storage Comment: Store at -20 °C. Stable for 12 months from date of receipt.

Expiry Date: 12 months



Western Blotting

Image 1. Western blot analysis of MRPS31 using HeLa whole cell lysates