

Datasheet for ABIN6263408

**anti-Mitochondrially Encoded ATP Synthase 8 (MT-ATP8)
(Internal Region) antibody**[Go to Product page](#)**1** Image

Overview

Quantity:	100 µL
Target:	Mitochondrially Encoded ATP Synthase 8 (MT-ATP8)
Binding Specificity:	Internal Region
Reactivity:	Human
Host:	Rabbit
Clonality:	Polyclonal
Conjugate:	Un-conjugated
Application:	Western Blotting (WB), ELISA

Product Details

Immunogen:	A synthesized peptide derived from human MT-ATP8, corresponding to a region within the internal amino acids.
Isotype:	IgG
Specificity:	MT-ATP8 Antibody detects endogenous levels of total MT-ATP8.
Purification:	The antiserum was purified by peptide affinity chromatography using SulfoLink™ Coupling Resin (Thermo Fisher Scientific).

Target Details

Target:	Mitochondrially Encoded ATP Synthase 8 (MT-ATP8)
Alternative Name:	MT-ATP8 (MT-ATP8 Products)

Target Details

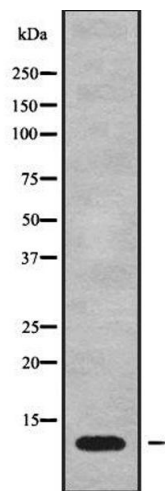
Background:	<p>Description: Mitochondrial membrane ATP synthase (F1F0 ATP synthase or Complex V) produces ATP from ADP in the presence of a proton gradient across the membrane which is generated by electron transport complexes of the respiratory chain. F-type ATPases consist of two structural domains, F1 - containing the extramembraneous catalytic core and F0 - containing the membrane proton channel, linked together by a central stalk and a peripheral stalk. During catalysis, ATP synthesis in the catalytic domain of F1 is coupled via a rotary mechanism of the central stalk subunits to proton translocation. Part of the complex F0 domain. Minor subunit located with subunit a in the membrane (By similarity).</p> <p>Gene: MT-ATP8</p>
Molecular Weight:	8 kDa
Gene ID:	4509
UniProt:	P03928
Pathways:	Proton Transport , Ribonucleoside Biosynthetic Process

Application Details

Application Notes:	WB 1:1000-3000, ELISA(peptide) 1:20000-1:40000
Restrictions:	For Research Use only

Handling

Format:	Liquid
Concentration:	1 mg/mL
Buffer:	Rabbit IgG in phosphate buffered saline , pH 7.4, 150 mM NaCl, 0.02 % sodium azide and 50 % glycerol.
Preservative:	Sodium azide
Precaution of Use:	This product contains Sodium azide: a POISONOUS AND HAZARDOUS SUBSTANCE which should be handled by trained staff only.
Storage:	-20 °C
Storage Comment:	Store at -20 °C. Stable for 12 months from date of receipt.
Expiry Date:	12 months



Western Blotting

Image 1. Western blot analysis of MT-ATP8 using Jurkat whole cell lysates