

Datasheet for ABIN6263413

**anti-MT-ND6 antibody****2** Images[Go to Product page](#)

## Overview

|              |  |
|--------------|--|
| Quantity:    | 100 µL   |
| Target:      | MT-ND6   |
| Reactivity:  | Human, Rat, Mouse  |
| Host:        | Rabbit   |
| Clonality:   | Polyclonal   |
| Conjugate:   | This MT-ND6 antibody is un-conjugated                    |
| Application: | ELISA, Immunohistochemistry (IHC), Western Blotting (WB) |

## Product Details

|                   |   |
|-------------------|---|
| Immunogen:        | A synthesized peptide derived from human MT-ND6   |
| Isotype:          | IgG   |
| Specificity:      | MT-ND6 Antibody detects endogenous levels of total MT-ND6   |
| Cross-Reactivity: | Human, Mouse (Murine), Rat (Rattus)   |
| Purification:     | The antiserum was purified by peptide affinity chromatography using SulfoLink™ Coupling Resin (Thermo Fisher Scientific). |

## Target Details

|                   |  |
|-------------------|--|
| Target:           | MT-ND6   |
| Alternative Name: | MT-ND6 ( <a href="#">MT-ND6 Products</a> )                                     |
| Background:       | Description: Core subunit of the mitochondrial membrane respiratory chain NADH |

## Target Details

dehydrogenase (Complex I) that is believed to belong to the minimal assembly required for catalysis. Complex I functions in the transfer of electrons from NADH to the respiratory chain. The immediate electron acceptor for the enzyme is believed to be ubiquinone (By similarity).  
Gene: MT-ND6

Molecular Weight: 19 kDa

Gene ID: 4541

UniProt: [P03923](#)

## Application Details

Application Notes: WB 1:1000-3000 IHC 1:200

Restrictions: For Research Use only

## Handling

Format: Liquid

Concentration: 1 mg/mL

Buffer: Rabbit IgG in phosphate buffered saline , pH 7.4, 150 mM NaCl, 0.02 % sodium azide and 50 % glycerol.

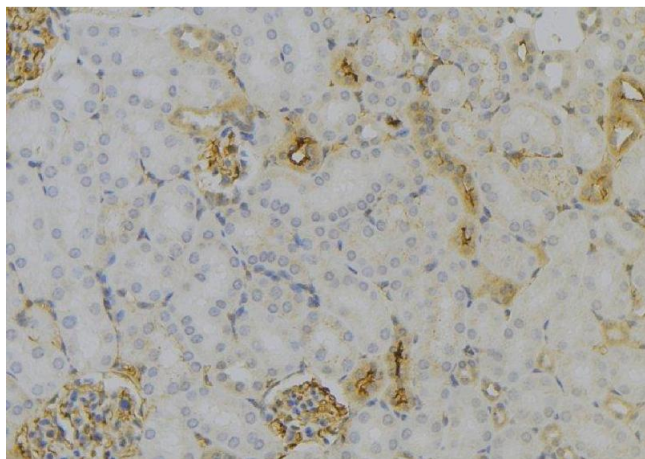
Preservative: Sodium azide

Precaution of Use: This product contains Sodium azide: a POISONOUS AND HAZARDOUS SUBSTANCE which should be handled by trained staff only.

Storage: -20 °C

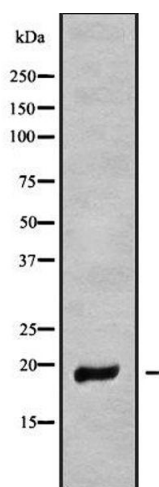
Storage Comment: Store at -20 °C.Stable for 12 months from date of receipt

Expiry Date: 12 months



### Immunohistochemistry

**Image 1.** ABIN6279588 at 1/100 staining Mouse kidney tissue by IHC-P. The sample was formaldehyde fixed and a heat mediated antigen retrieval step in citrate buffer was performed. The sample was then blocked and incubated with the antibody for 1.5 hours at 22°C. An HRP conjugated goat anti-rabbit antibody was used as the secondary



### Western Blotting

**Image 2.** Western blot analysis of MT-ND6 using HepG2 whole cell lysates